



Pastoral Market Update

Live Cattle Exports via Darwin Port – **JUNE 2009**

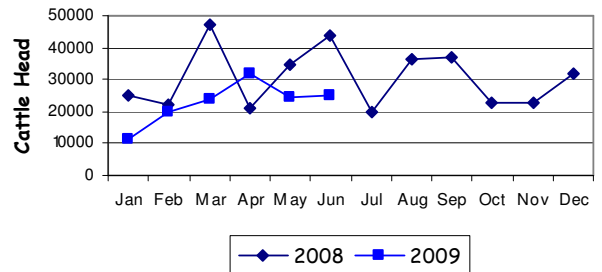
Please note that the "NT CATTLE" figures are NT cattle exported through the Port of Darwin only, some NT cattle are exported through interstate ports.

Destination	TOTAL CATTLE (including interstate)							# NT CATTLE						
	2007	2008	Last year 30/06/08	YTD 30/06/09	1-30 JUN	Previous Month	Difference	2007	2008	Last year 30/06/08	YTD 30/06/09	1-30 JUN	Previous Month	Difference
BRUNEI	4,916	4,288	1,725	991	0	0	0	4,160	3,238	1,725	991	0	0	0
INDONESIA	258,736	341,768	183,179	128,837	22,129	24,267	-2,138	225,177	276,293	131,629	122,560	19,200	24,267	-5,067
PHILIPPINES	12,041	12,247	6,317	5,946	1,786	0	+1,786	10,321	11,945	6,317	5,946	1,786	0	+1,786
SABAH	1,397	2,985	1,244	910	910	0	+910	1,397	2,055	1,244	910	910	0	+910
SARAWAK	2,143	2,340	1,590	0	0	0	0	2,143	1,590	1,590	0	0	0	0
W-MALAYSIA	3,813	1,296	514	0	0	0	0	3,813	418	418	0	0	0	0
EAST TIMOR	0	0	0	0	0	0	0	0	0	0	0	0	0	0
TOTAL	283,046	364,944	194,569	136,684	24,825	24,267	+558	247,281	295,539	141,333	130,407	21,896	24,267	-2,371
				-57,885							-10,926			

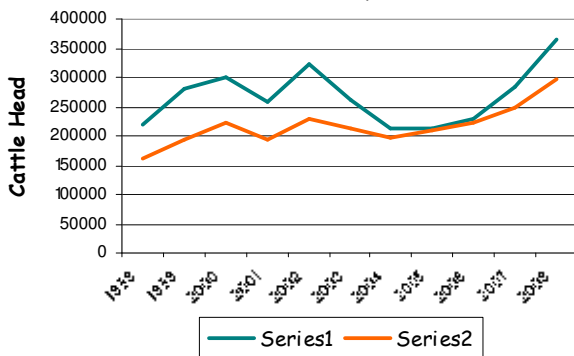
June at a glance

- 24,825 head of cattle through the Port of Darwin during June, 558 head more than May and 18,766 less than June last year.
- 2009 figures indicate 57,885 head less than the same time last year.

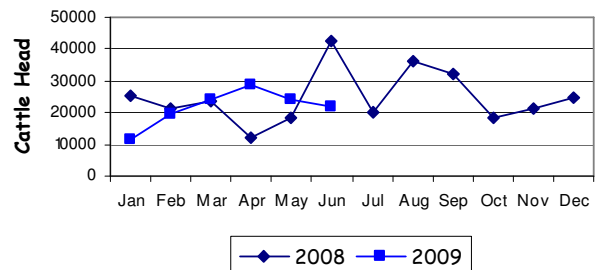
TOTAL Live Cattle Exports thru Port of Darwin
2008 v 2009



Live Cattle Exports thru the Port of Darwin
(last 10 years)



NT Live Cattle Exports thru Port of Darwin
2008 v 2009




PREVIOUS 8 YEARS

Total Cattle, Port of Darwin								NT Cattle, Port of Darwin							
2001	2002	2003	2004	2005	2006	2007	2008	2001	2002	2003	2004	2005	2006	2007	2008
258,127	322,602	260,618	211,042	212,616	229,654	283,046	364,944	193,172	229,796	212,520	205,204	210,558	225,413	247,281	295,539

OTHER LIVESTOCK EXPORTS VIA DARWIN PORT (includes NT and Interstate Stock)

Destination	Buffalo			Camels			Goats			Horses			Sheep			Pigs		
	2008	2009	1-30 JUN	2008	2009	1-30 JUN	2008	2009	1-30 JUN	2008	2009	1-30 JUN	2008	2009	1-30 JUN	2008	2009	1-30 JUN
BRUNEI	306	0	0	0	0	0	484	0	0	1	0	0	0	0	0	0	0	0
INDONESIA	3,815	1,215	173	0	0	0	0	0	0	0	0	0	0	0	0	0	0	0
PHILIPPINES	0	0	0	0	0	0	0	0	0	0	0	0	0	0	0	0	0	0
W-MALAYSIA	280	0	0	0	0	0	0	0	0	0	0	0	3,036	0	0	0	0	0
SABAH	236	176	176	0	0	0	0	0	0	0	0	0	0	0	0	0	0	0
SARAWAK	0	0	0	0	0	0	1,333	0	0	0	0	0	0	0	0	0	0	0
TOTAL	4,637	1,391	349	0	0	0	1,817	0	0	1	0	0	3,036	0	0	0	0	0

NATIONAL CATTLE PRICES - W/E 3/7/09

JAPAN OX									MEDIUM STEER								
Estimated dressed weight price (cents/kg)									Estimated dressed weight price (cents/kg)								
SALEYARDS				O.T.HOOKS					SALEYARDS				O.T.HOOKS				
NSW	QLD	SA	AV (Aust)	NSW	QLD	SA	AV (Aust)		NSW	QLD	SA	AV (Aust)	NSW	QLD	SA	AV (Aust)	
This week	324	321	345	324	301	287	Nq	289	This week	316	317	345	318	300	284	Nq	292
Last week	329	324	nq	326	298	286	Nq	288	Last week	310	312	356	314	297	282	Nq	291
Year ago	326	331	nq	332	319	300	nq	308	Year ago	324	307	nq	319	312	296	Nq	306
US COW									TRADE STEER								
Estimated dressed weight price (cents/kg)									Estimated dressed weight price (cents/kg)								
SALEYARDS				O.T.HOOKS					SALEYARDS				O.T.HOOKS				
NSW	QLD	SA	AV (Aust)	NSW	QLD	SA	AV (Aust)		NSW	QLD	SA	AV (Aust)	NSW	QLD	SA	AV (Aust)	
This week	266	244	292	261	245	232	240	245	This week	343	325	327	344	299	291	nq	323
Last week	262	263	284	264	245	232	240	244	Last week	348	340	329	349	299	287	nq	322
Year ago	280	251	291	274	257	225	255	251	Year ago	364	313	353	348	317	306	nq	324
LIVE EXPORT QUOTES									<p>Prices courtesy of Meat & Livestock Australia</p>  <p>www.mla.com.au</p>								
Estimated live weight price (cents/kg)																	
LIGHT STEERS (280-400 kg)				HEAVY STEERS (400+ kg)													
Darwin		Fremantle		Darwin		Fremantle											
This week	160		nq		155			nq									
Last week	160		nq		155			nq									
Year ago	160		nq		150			nq									

CURRENCY EXCHANGE RATES

Key Currencies 1AUD =	Current 7.7.2009	Previous month 1.6.2009	4 months ago 1.3.2009	1 Year ago 1.7.2008	Pre-devaluation 01.07.1997
Brunei Dollar	1.17019	1.17825	1.00135	1.32572	1.076
Indonesian Rupiah	8,158.13	8,301.54	7,729.50	8,835.32	1830
Philippine Peso	38.32743	38.29722	31.26111	43.19539	19.84
Malaysian Ringgit	2.81025	2.82240	2.40719	3.11334	1.9
Euro	0.56861	0.56999	0.50476	0.60910	N/A
US Dollar	0.79297	0.80734	0.63923	0.96150	0.752

Prepared by the NT Department of Regional Development, Primary Industry, Fisheries and Resources

This publication contains commodity market information prepared for DRDPIFR staff use in strategic research and extension planning. While DRDPIFR exercise care in the compilation and preparation of this information, no responsibility is taken for its accuracy or for the completeness of any information that is reproduced from other sources. DRDPIFR denies any loss or damage to any person whether caused directly or indirectly by the use of any of the information provided.