



Pastoral Market Update

Live Cattle Exports via Darwin Port – JULY 2009

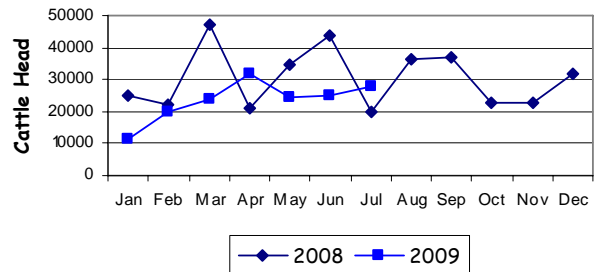
Please note that the "NT CATTLE" figures are NT cattle exported through the Port of Darwin only, some NT cattle are exported through interstate ports.

Destination	TOTAL CATTLE (including interstate)							# NT CATTLE						
	2007	2008	Last year 31/07/08	YTD 31/07/09	1-31 JULY	Previous Month	Difference	2007	2008	Last year 31/07/08	YTD 31/07/09	1-31 JULY	Previous Month	Difference
BRUNEI	4,916	4,288	2,589	991	0	0	0	4,160	3,238	2,589	991	0	0	0
INDONESIA	258,736	341,768	202,466	154,201	25,364	22,129	+3,235	225,177	276,293	150,916	147,924	25,364	19,200	+6,164
PHILIPPINES	12,041	12,247	6,317	8,635	2,689	1,786	+903	10,321	11,945	6,317	8,635	2,689	1,786	+903
SABAH	1,397	2,985	1,244	910	0	910	-910	1,397	2,055	1,244	910	0	910	-910
SARAWAK	2,143	2,340	1,590	0	0	0	0	2,143	1,590	1,590	0	0	0	0
W-MALAYSIA	3,813	1,296	514	0	0	0	0	3,813	418	418	0	0	0	0
EAST TIMOR	0	0	0	0	0	0	0	0	0	0	0	0	0	0
TOTAL	283,046	364,944	214,720	164,737	28,053	24,825	+3,228	247,281	295,539	161,484	158,460	28,053	21,896	+6,157
				-49,983										-3,024

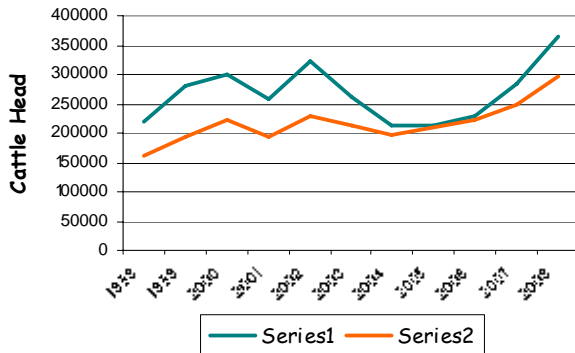
July at a glance

- 28,053 head of cattle through the Port of Darwin during July, 3,228 head more than June and 7,902 more than July last year.
- 2009 total cattle figures indicate 49,983 head less than the same time last year. NT cattle 3,024 less than last year.

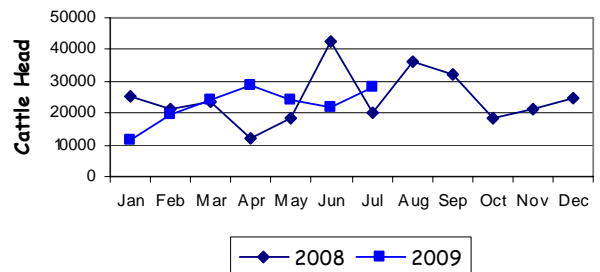
TOTAL Live Cattle Exports thru Port of Darwin 2008 v 2009



Live Cattle Exports thru the Port of Darwin (last 10 years)



NT Live Cattle Exports thru Port of Darwin 2008 v 2009




PREVIOUS 8 YEARS

Total Cattle, Port of Darwin								NT Cattle, Port of Darwin							
2001	2002	2003	2004	2005	2006	2007	2008	2001	2002	2003	2004	2005	2006	2007	2008
258,127	322,602	260,618	211,042	212,616	229,654	283,046	364,944	193,172	229,796	212,520	205,204	210,558	225,413	247,281	295,539

OTHER LIVESTOCK EXPORTS VIA DARWIN PORT (includes NT and Interstate Stock)

Destination	Buffalo			Camels			Goats			Horses			Sheep			Pigs		
	2008	2009	1-31 JULY	2008	2009	1-31 JULY	2008	2009	1-31 JULY	2008	2009	1-31 JULY	2008	2009	1-31 JULY	2008	2009	1-31 JULY
BRUNEI	306	0	0	0	0	0	484	0	0	1	0	0	0	0	0	0	0	0
INDONESIA	3,815	1,525	310	0	0	0	0	0	0	0	0	0	0	0	0	0	0	0
PHILIPPINES	0	0	0	0	0	0	0	0	0	0	0	0	0	0	531	0	0	0
W-MALAYSIA	280	0	0	0	0	0	0	0	0	0	0	0	3,036	0	0	0	0	0
SABAH	236	176	0	0	0	0	0	0	0	0	0	0	0	0	0	0	0	0
SARAWAK	0	0	0	0	0	0	1,333	0	0	0	0	0	0	0	0	0	0	0
TOTAL	4,637	1,701	310	0	0	0	1,817	0	0	1	0	0	3,036	0	531	0	0	0

NATIONAL CATTLE PRICES - W/E 31/7/09

JAPAN OX									MEDIUM STEER								
Estimated dressed weight price (cents/kg)									Estimated dressed weight price (cents/kg)								
SALEYARDS				O.T.HOOKS					SALEYARDS				O.T.HOOKS				
NSW	QLD	SA	AV (Aust)	NSW	QLD	SA	AV (Aust)	NSW	QLD	SA	AV (Aust)	NSW	QLD	SA	AV (Aust)		
This week	323	326	nq	327	306	299	Nq	296	This week	325	330	353	330	305	298	Nq	296
Last week	324	330	nq	326	305	299	Nq	296	Last week	317	325	345	322	304	298	Nq	296
Year ago	329	325	nq	338	329	310	nq	313	Year ago	338	nq	nq	340	325	306	Nq	312
US COW									TRADE STEER								
Estimated dressed weight price (cents/kg)									Estimated dressed weight price (cents/kg)								
SALEYARDS				O.T.HOOKS					SALEYARDS				O.T.HOOKS				
NSW	QLD	SA	AV (Aust)	NSW	QLD	SA	AV (Aust)	NSW	QLD	SA	AV (Aust)	NSW	QLD	SA	AV (Aust)		
This week	274	261	291	270	249	234	240	247	This week	350	336	336	342	304	299	nq	325
Last week	267	266	292	268	249	234	260	250	Last week	346	347	338	346	304	299	nq	325
Year ago	296	273	299	290	269	234	255	259	Year ago	374	330	355	369	327	315	nq	337
LIVE EXPORT QUOTES									<p>Prices courtesy of Meat & Livestock Australia</p>  <p>www.mla.com.au</p>								
Estimated live weight price (cents/kg)																	
LIGHT STEERS (280-400 kg)				HEAVY STEERS (400+ kg)													
Darwin		Fremantle		Darwin		Fremantle											
This week	170		nq	165			nq										
Last week	160		nq	155			nq										
Year ago	1175		nq	170			nq										

CURRENCY EXCHANGE RATES

Key Currencies 1AUD =	Current 5.8.2009	Previous month 1.7.2009	3 months ago 1.5.2009	1 Year ago 1.8.2008	Pre-devaluation 01.07.1997
Brunei Dollar	1.22205	1.17019	1.09172	1.28527	1.076
Indonesian Rupiah	8,179.61	8,158.13	7,826.93	8,386.91	1830
Philippine Peso	40.41892	38.32743	35.22998	40.66348	19.84
Malaysian Ringgit	2.94756	2.81025	2.60219	3.01879	1.9
Euro	0.58504	0.56861	0.54929	0.59413	N/A
US Dollar	0.84250	0.79297	0.72947	0.92174	0.752

Prepared by the NT Department of Regional Development, Primary Industry, Fisheries and Resources

This publication contains commodity market information prepared for DRDP/IFR staff use in strategic research and extension planning. While DRDP/IFR exercise care in the compilation and preparation of this information, no responsibility is taken for its accuracy or for the completeness of any information that is reproduced from other sources. DRDP/IFR denies any loss or damage to any person whether caused directly or indirectly by the use of any of the information provided.