



# Pastoral Market Update

## Live Cattle Exports via Darwin Port – **DECEMBER 2009**

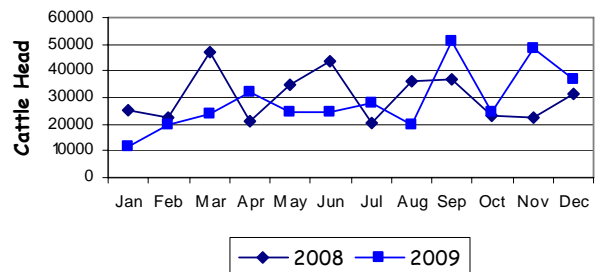
# Please note that the "NT CATTLE" figures are NT cattle exported through the Port of Darwin only, some NT cattle are exported through interstate ports.

Destination	TOTAL CATTLE (including interstate)							# NT CATTLE						
	2007	2008	Last year 31/12/08	YTD 31/12/09	1-31 DEC	Previous Month	Difference	2007	2008	Last year 31/12/08	YTD 31/12/09	1-31 DEC	Previous Month	Difference
BRUNEI	4,916	4,288	4,288	3,131	450	790	-340	4,160	3,238	3,238	2,681	0	790	-790
INDONESIA	258,736	341,768	341,768	330,433	36,945	45,785	-8,840	225,177	276,293	276,293	288,887	26,826	26,235	+591
PHILIPPINES	12,041	12,247	12,247	10,422	0	1,787	-1,787	10,321	11,945	11,945	10,422	0	1,787	-1,787
SABAH	1,397	2,985	2,985	1,410	500	0	0	1,397	2,055	2,055	910	0	0	0
SARAWAK	2,143	2,340	2,340	0	0	0	0	2,143	1,590	1,590	0	0	0	0
W-MALAYSIA	3,813	1,296	1,296	1,918	0	0	0	3,813	418	418	1,918	0	0	0
EAST TIMOR	0	0	0	0	0	0	0	0	0	0	0	0	0	0
<b>TOTAL</b>	<b>283,046</b>	<b>364,944</b>	<b>364,944</b>	<b>347,314</b>	<b>37,895</b>	<b>48,362</b>	<b>-11,467</b>	<b>247,281</b>	<b>295,539</b>	<b>295,539</b>	<b>304,818</b>	<b>26,826</b>	<b>28,812</b>	<b>-1,986</b>
				-17,630							+9,279			

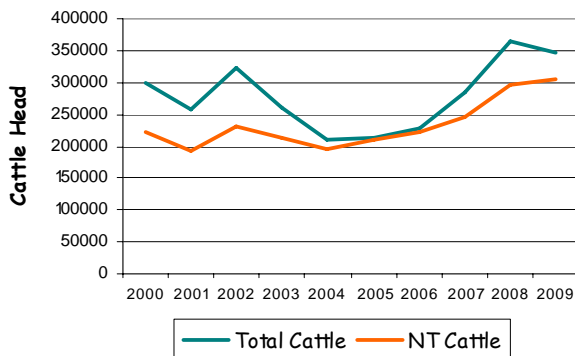
### December at a glance

- 37,895 head of cattle through the Port of Darwin during December, 10,467 less than November and 6,191 more than December last year.
- 2009 total cattle figures indicate 17,630 head less than last year. NT cattle 9,279 more than last year.

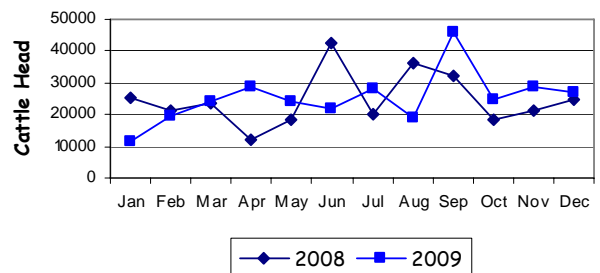
**TOTAL** Live Cattle Exports thru Port of Darwin  
2008 v 2009



Live Cattle Exports thru the Port of Darwin  
(last 10 years)



**NT** Live Cattle Exports thru Port of Darwin  
2008 v 2009




### PREVIOUS 8 YEARS

Total Cattle, Port of Darwin								NT Cattle, Port of Darwin							
2002	2003	2004	2005	2006	2007	2008	2009	2002	2003	2004	2005	2006	2007	2008	2009
322,602	260,618	211,042	212,616	229,654	283,046	364,944	347,314	229,796	212,520	205,204	210,558	225,413	247,281	295,539	304,818

### OTHER LIVESTOCK EXPORTS VIA DARWIN PORT (includes NT and Interstate Stock)

Destination	Buffalo			Camels			Goats			Horses			Sheep			Pigs		
	2008	2009	1-31 DEC	2008	2009	1-31 DEC	2008	2009	1-31 DEC	2008	2009	1-31 DEC	2008	2009	1-31 DEC	2008	2009	1-31 DEC
BRUNEI	306	327	0	0	0	0	484	397	0	1	0	0	0	0	0	0	0	0
INDONESIA	3,815	3,274	142	0	0	0	0	0	0	0	0	0	0	0	0	0	0	0
PHILIPPINES	0	0	0	0	0	0	0	0	0	0	0	0	0	531	0	0	0	0
W-MALAYSIA	280	0	0	0	0	0	0	0	0	0	0	0	3,036	0	0	0	0	0
SABAH	236	176	0	0	0	0	0	0	0	0	0	0	0	0	0	0	0	0
SARAWAK	0	0	0	0	0	0	1,333	0	0	0	0	0	0	0	0	0	0	0
<b>TOTAL</b>	<b>4,637</b>	<b>3,777</b>	<b>142</b>	<b>0</b>	<b>0</b>	<b>0</b>	<b>1,817</b>	<b>397</b>	<b>0</b>	<b>1</b>	<b>0</b>	<b>0</b>	<b>3,036</b>	<b>531</b>	<b>0</b>	<b>0</b>	<b>0</b>	<b>0</b>

### NATIONAL CATTLE PRICES - W/E 18/12/09

JAPAN OX									MEDIUM STEER								
Estimated dressed weight price (cents/kg)									Estimated dressed weight price (cents/kg)								
SALEYARDS				O.T.HOOKS					SALEYARDS				O.T.HOOKS				
NSW	QLD	SA	AV (Aust)	NSW	QLD	SA	AV (Aust)	NSW	QLD	SA	AV (Aust)	NSW	QLD	SA	AV (Aust)		
This week	273	274	nq	278	276	291	Nq	276	This week	269	278	nq	274	263	285	Nq	272
Last week	268	278	262	271	282	286	Nq	276	Last week	260	273	278	266	269	282	Nq	273
Year ago	320	325	294	317	313	nq	nq	295	Year ago	316	277	nq	315	306	nq	Nq	290
US COW									TRADE STEER								
Estimated dressed weight price (cents/kg)									Estimated dressed weight price (cents/kg)								
SALEYARDS				O.T.HOOKS					SALEYARDS				O.T.HOOKS				
NSW	QLD	SA	AV (Aust)	NSW	QLD	SA	AV (Aust)	NSW	QLD	SA	AV (Aust)	NSW	QLD	SA	AV (Aust)		
This week	219	236	246	224	2125	228	220	222	This week	280	279	270	285	276	276	nq	290
Last week	221	240	243	227	221	228	220	224	Last week	281	281	276	288	282	278	nq	294
Year ago	281	295	269	270	257	nq	250	260	Year ago	329	371	308	326	317	nq	nq	321
LIVE EXPORT QUOTES									<p>Prices courtesy of Meat &amp; Livestock Australia</p>  <p>www.mla.com.au</p>								
Estimated <u>live</u> weight price (cents/kg)																	
LIGHT STEERS (280-400 kg)				HEAVY STEERS (400+ kg)													
Darwin		Fremantle		Darwin		Fremantle											
This week	195		nq		190		nq										
Last week	195		nq		190		nq										
Year ago	210		175		nq		165										

### CURRENCY EXCHANGE RATES

Key Currencies 1AUD =	Current 25.1.2010	Previous month 1.12.2009	3 months ago 1.10.2009	1 Year ago 31.12.2008	Pre-devaluation 01.07.1997
Brunei Dollar	1.2446	1.25071	1.24824	1.00053	1.076
Indonesian Rupiah	8,376.04	8,563.67	8,402.02	7,661.19	1830
Philippine Peso	47.7721	42.9432	40.91117	32.58802	19.84
Malaysian Ringgit	3.0600	3.09301	3.02666	2.40462	1.9
Euro	0.6370	0.60863	0.59742	0.48860	N/A
US Dollar	0.9006	0.91463	0.87381	0.68491	0.752

Prepared by the NT Department of Resources

This publication contains commodity market information prepared for DOR staff use in strategic research and extension planning. While DOR exercise care in the compilation and preparation of this information, no responsibility is taken for its accuracy or for the completeness of any information that is reproduced from other sources. DOR denies any loss or damage to any person whether caused directly or indirectly by the use of any of the information provided.