



Pastoral Market Update

Live Cattle Exports via Darwin Port – JULY 2008

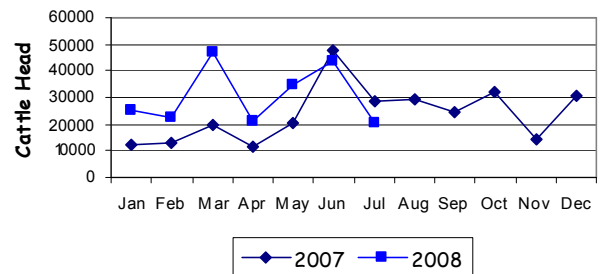
Please note that the "NT CATTLE" figures are NT cattle exported through the Port of Darwin only, some NT cattle are exported through interstate ports.

Destination	TOTAL CATTLE (including interstate)							# NT CATTLE						
	2006	2007	Last year 31/7/07	YTD 31/7/08	1-31 JULY	Previous Month	Difference	2006	2007	Last year 31/7/07	YTD 31/7/08	1-31 JULY	Previous Month	Difference
BRUNEI	7,453	4,916	2,708	2,589	864	0	+864	7,227	4,160	1,952	2,589	864	0	+864
INDONESIA	190,297	258,736	143,748	202,466	19,287	39,209	-19,922	188,419	225,177	119,088	150,916	19,287	38,100	-18,813
PHILIPPINES	10,071	12,041	4,417	6,317	0	2,624	-2,624	10,071	10,321	2,697	6,317	0	2,624	-2,624
SABAH	5,758	1,397	355	1,244	0	1,244	-1,244	4,944	1,397	355	1,244	0	1,224	-1,224
SARAWAK	1,883	2,143	993	1,590	0	0	0	1,883	2,143	993	1,590	0	0	0
W-MALAYSIA	12,412	3,813	0	514	0	514	-514	10,583	3,813	0	418	0	0	0
EAST TIMOR	0	0	0	0	0	0	0	0	0	0	0	0	0	0
TOTAL	227,874	283,046	152,221	214,720	20,151	43,591	-23,440	223,127	247,281	125,085	161,484	20,151	42,386	-22,235
				+62,499							+36,399			

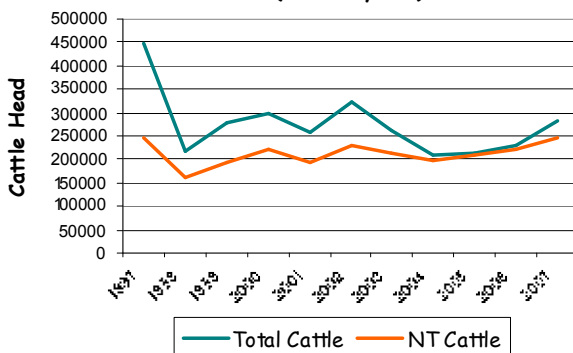
JULY at a glance

- 20,151 head of cattle through the Port of Darwin during July, 23,440 head less than June and 8,217 less than July last year.
- 2008 figures indicate 62,499 head more than the same time last year.
- MV Deneb Prima was first loaded at Townsville & topped up in Darwin to a total of 23,376 head which is a world record for a ship.

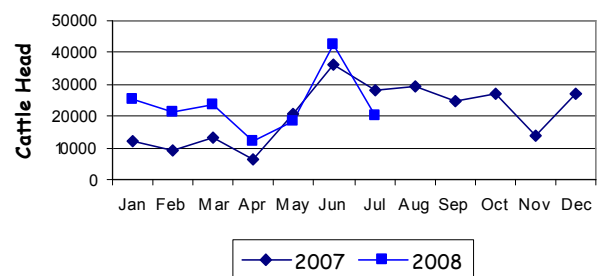
TOTAL Live Cattle Exports thru Port of Darwin 2007 v 2008



Live Cattle Exports thru the Port of Darwin (last 10 years)



NT Live Cattle Exports thru Port of Darwin 2007 v 2008




PREVIOUS 8 YEARS

Total Cattle, Port of Darwin								NT Cattle, Port of Darwin							
2000	2001	2002	2003	2004	2005	2006	2007	2000	2001	2002	2003	2004	2005	2006	2007
299,179	258,127	322,602	260,618	211,042	212,616	229,654	283,046	222,669	193,172	229,796	212,520	205,204	210,558	225,413	247,281

OTHER LIVESTOCK EXPORTS VIA DARWIN PORT (includes NT and Interstate Stock)

Destination	Buffalo			Camels			Goats			Horses			Sheep			Pigs		
	2007	2008	1-31 JULY	2007	2008	1-31 JULY	2007	2008	1-31 JULY	2007	2008	1-31 JULY	2007	2008	1-31 JULY	2007	2008	1-31 JULY
BRUNEI	306	56	0	0	0	0	1260	0	0		0	0	0	0	0	0	0	0
INDONESIA	2,865	2,218	584	0	0	0	2,257	0	0	9	1	0	0	0	0	0	0	0
PHILIPPINES	0	0	0	0	0	0	0	0	0	0	0	0	0	0	0	0	0	0
W-MALAYSIA	582	0	0	0	0	0	2,312	0	0	0	0	0	825	3,036	0	0	0	0
SABAH	152	144		0	0	0	7,349	0	0	0	0	0	0	0	0	0	0	0
SARAWAK	0	0	0	0	0	0	1,358	1,333	0	0	0	0	0	0	0	0	0	0
TOTAL	3,905	2,418	584	0	0	0	15,131	1,333	0	9	1	0	825	3,036	0	0	0	0

NATIONAL CATTLE PRICES - W/E 1/8/08

JAPAN OX									MEDIUM STEER										
Estimated dressed weight price (cents/kg)									Estimated dressed weight price (cents/kg)										
SALEYARDS				O.T.HOOKS					SALEYARDS				O.T.HOOKS						
NSW	QLD	SA	AV (Aust)	NSW	QLD	SA	AV (Aust)	NSW	QLD	SA	AV (Aust)	NSW	QLD	SA	AV (Aust)	NSW	QLD	SA	AV (Aust)
This week	339	335	nq	338	329	310	Nq	313	This week	338	nq	nq	340	325	306	Nq	312		
Last week	333	348	nq	341	328	310	Nq	312	Last week	323	317	nq	320	325	306	Nq	312		
Year ago	331	336	nq	327	320	316	nq	315	Year ago	331	312	340	323	319	308	Nq	304		
US COW									TRADE STEER										
Estimated dressed weight price (cents/kg)									Estimated dressed weight price (cents/kg)										
SALEYARDS				O.T.HOOKS					SALEYARDS				O.T.HOOKS						
NSW	QLD	SA	AV (Aust)	NSW	QLD	SA	AV (Aust)	NSW	QLD	SA	AV (Aust)	NSW	QLD	SA	AV (Aust)	NSW	QLD	SA	AV (Aust)
This week	296	273	299	290	269	234	255	259	This week	374	330	355	369	327	315	nq	337		
Last week	284	261	313	272	267	234	255	255	Last week	363	345	355	360	327	303	nq	336		
Year ago	275	256	284	269	248	268	240	246	Year ago	360	351	346	358	311	315	350	321		
LIVE EXPORT QUOTES									<p>Prices courtesy of Meat & Livestock Australia</p>  <p>www.mla.com.au</p>										
Estimated live weight price (cents/kg)																			
LIGHT STEERS (280-400 kg)				HEAVY STEERS (400+ kg)															
Darwin		Fremantle		Darwin		Fremantle													
This week	175		nq		170		nq												
Last week	175		nq		170		nq												
Year ago	175		nq		165		nq												

CURRENCY EXCHANGE RATES

Key Currencies 1AUD =	Current 6.8.2008	Previous month 1.7.2008	4 months ago 1.4.2008	1 Year ago 1.8.2007	Pre-devaluation 01.07.1997
Brunei Dollar	1.28527	1.32572	1.27670	1.30786	1.076
Indonesian Rupiah	8,386.91	8,835.32	8,424.22	7,888.38	1830
Philippine Peso	40.66348	43.19539	38.19152	39.00620	19.84
Malaysian Ringgit	3.01879	3.13334	2.92597	2.96731	1.9
Euro	0.59413	0.60910	0.57912	0.61981	N/A
US Dollar	0.92174	0.96150	0.91487	0.85589	0.752

Prepared by the NT Department of Primary Industry, Fisheries and Mines

This publication contains commodity market information prepared for DPIFM staff use in strategic research and extension planning. While DPIFM exercise care in the compilation and preparation of this information, no responsibility is taken for its accuracy or for the completeness of any information that is reproduced from other sources. DPIFM denies any loss or damage to any person whether caused directly or indirectly by the use of any of the information provided.