



Pastoral Market Update

Live Cattle Exports via Darwin Port – **APRIL 2008**

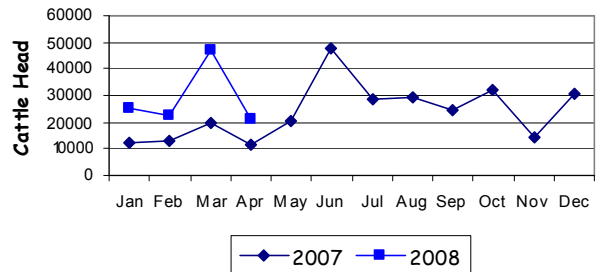
Please note that the "NT CATTLE" figures are NT cattle exported through the Port of Darwin only, some NT cattle are exported through interstate ports.

Destination	TOTAL CATTLE (including interstate)							# NT CATTLE						
	2006	2007	Last year 30/4/07	YTD 30/4/08	1-30 APRIL	Previous Month	Difference	2006	2007	Last year 30/4/07	YTD 30/4/08	1-30 APRIL	Previous Month	Difference
BRUNEI	7,453	4,916	756	1,725	897	0	+897	7,227	4,160	0	1,725	897	0	+897
INDONESIA	190,297	258,736	52,172	109,123	18,792	43,664	-24,872	188,419	225,177	39,312	75,194	9,592	19,984	-10,392
PHILIPPINES	10,071	12,041	2,667	3,693	0	3,693	-3,693	10,071	10,321	1,217	3,693	0	3,693	-3,693
SABAH	5,758	1,397	0	0	0	0	0	4,944	1,397	0	0	0	0	0
SARAWAK	1,883	2,143	0	1,590	1,590	0	+1,590	1,883	2,143	0	1,590	1,590	0	+1,590
W-MALAYSIA	12,412	3,813	0	0	0	0	0	10,583	3,813	0	0	0	0	0
EAST TIMOR	0	0	0	0	0	0	0	0	0	0	0	0	0	0
TOTAL	227,874	283,046	55,595	116,131	21,279	47,357	-26,078	223,127	247,281	40,529	82,202	12,079	23,677	-11,598
				+60,536							+41,673			

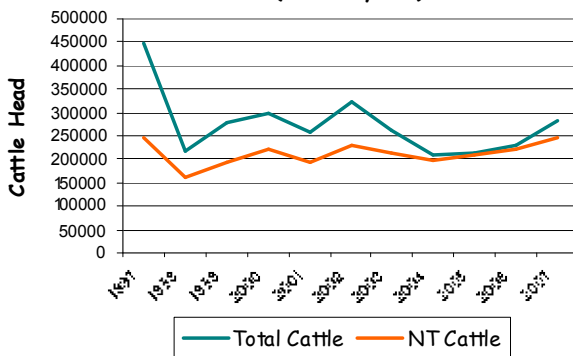
April at a glance

- 21,279 head of cattle through the Port of Darwin during April, 26,078 head less than March and 9,764 more than April last year.
- 2008 figures indicate 60,536 head more than the same time last year.
- 9,200 head of cattle from Qld were exported.

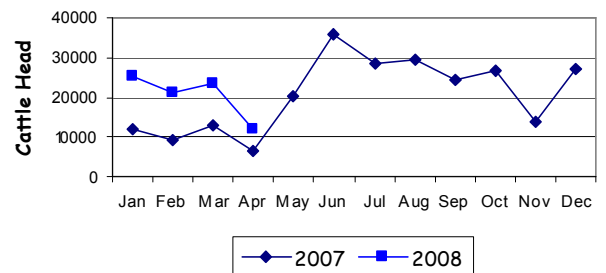
TOTAL Live Cattle Exports thru Port of Darwin 2007 v 2008



Live Cattle Exports thru the Port of Darwin (last 10 years)



NT Live Cattle Exports thru Port of Darwin 2007 v 2008




PREVIOUS 8 YEARS

Total Cattle, Port of Darwin								NT Cattle, Port of Darwin							
2000	2001	2002	2003	2004	2005	2006	2007	2000	2001	2002	2003	2004	2005	2006	2007
299,179	258,127	322,602	260,618	211,042	212,616	229,654	283,046	222,669	193,172	229,796	212,520	205,204	210,558	225,413	247,281

OTHER LIVESTOCK EXPORTS VIA DARWIN PORT (includes NT and Interstate Stock)

Destination	Buffalo			Camels			Goats			Horses			Sheep			Pigs		
	2007	2008	1-30 APR	2007	2008	1-30 APR	2007	2008	1-30 APR	2007	2008	1-30 APR	2007	2008	1-30 APR	2007	2008	1-30 APR
BRUNEI	306	56	0	0	0	0	1260	0	0		0	0	0	0	0	0	0	0
INDONESIA	2,865	1,024	92	0	0	0	2,257	0	0	9	0	0	0	0	0	0	0	0
PHILIPPINES	0	0	0	0	0	0	0	0	0	0	0	0	0	0	0	0	0	0
W-MALAYSIA	582	0	0	0	0	0	2,312	0	0	0	0	0	825	0	0	0	0	0
SABAH	152	0	0	0	0	0	7,349	0	0	0	0	0	0	0	0	0	0	0
SARAWAK	0	0	0	0	0	0	1,358	1,333	1,333	0	0	0	0	0	0	0	0	0
TOTAL	3,905	1,080	92	0	0	0	15,131	1,333	1,333	9	0	0	825	0	0	0	0	0

NATIONAL CATTLE PRICES - W/E 2/5/08

JAPAN OX									MEDIUM STEER										
Estimated dressed weight price (cents/kg)									Estimated dressed weight price (cents/kg)										
SALEYARDS				O.T.HOOKS					SALEYARDS				O.T.HOOKS						
NSW	QLD	SA	AV (Aust)	NSW	QLD	SA	AV (Aust)	NSW	QLD	SA	AV (Aust)	NSW	QLD	SA	AV (Aust)	NSW	QLD	SA	AV (Aust)
This week	293	306	nq	304	302	301	Nq	291	This week	283	303	nq	294	295	299	Nq	295		
Last week	312	312	nq	311	306	302	Nq	291	Last week	294	299	nq	296	295	299	Nq	292		
Year ago	317	304	343	310	305	301	nq	290	Year ago	302	289	344	295	302	301	Nq	282		
US COW									TRADE STEER										
Estimated dressed weight price (cents/kg)									Estimated dressed weight price (cents/kg)										
SALEYARDS				O.T.HOOKS					SALEYARDS				O.T.HOOKS						
NSW	QLD	SA	AV (Aust)	NSW	QLD	SA	AV (Aust)	NSW	QLD	SA	AV (Aust)	NSW	QLD	SA	AV (Aust)	NSW	QLD	SA	AV (Aust)
This week	252	240	282	252	240	225	245	235	This week	323	326	326	325	306	306	nq	316		
Last week	250	247	271	254	238	225	245	235	Last week	313	335	294	317	306	301	nq	315		
Year ago	259	258	263	257	231	223	190	203	Year ago	351	316	342	344	306	281	353	306		
LIVE EXPORT QUOTES									<p>Prices courtesy of Meat & Livestock Australia</p>  <p>www.mla.com.au</p>										
Estimated live weight price (cents/kg)																			
LIGHT STEERS (280-400 kg)				HEAVY STEERS (400+ kg)															
Darwin		Fremantle		Darwin		Fremantle													
This week	160		nq	150			nq												
Last week	nq		nq	nq			nq												
Year ago	175		nq	160			nq												

CURRENCY EXCHANGE RATES

Key Currencies 1AUD =	Current 7.5.2008	Previous month 1.4.2008	4 months ago 1.1.2008	1 Year ago 1.4.2007	Pre-devaluation 01.07.1997
Brunei Dollar	1.29651	1.27670	1.30372	1.25203	1.076
Indonesian Rupiah	8,661.51	8,424.22	8,339.62	7,416.68	1830
Philippine Peso	39.79742	38.19152	37.52550	39.14758	19.84
Malaysian Ringgit	2.97013	2.92597	2.97278	2.81481	1.9
Euro	0.60830	0.57912	0.61142	0.60964	N/A
US Dollar	0.94064	0.91487	0.90471	0.81361	0.752

Prepared by the NT Department of Primary Industry, Fisheries and Mines

This publication contains commodity market information prepared for DPIFM staff use in strategic research and extension planning. While DPIFM exercise care in the compilation and preparation of this information, no responsibility is taken for its accuracy or for the completeness of any information that is reproduced from other sources. DPIFM denies any loss or damage to any person whether caused directly or indirectly by the use of any of the information provided.