



Pastoral Market Update

Live Cattle Exports via Darwin Port – **DECEMBER 2007**

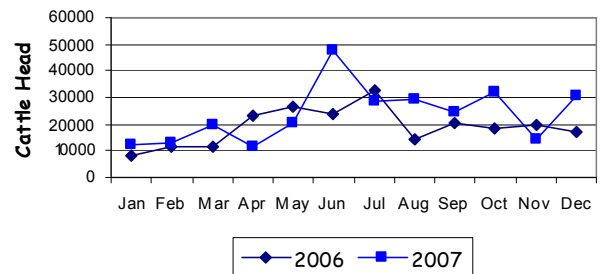
Please note that the "NT CATTLE" figures are NT cattle exported through the Port of Darwin only, some NT cattle are exported through interstate ports.

Destination	TOTAL CATTLE (including interstate)							# NT CATTLE							
	2005	2006	Last year 31/12/06	YTD 31/12/07	1-31 DEC	Previous Month		2005	2006	Last year 31/12/06	YTD 31/12/07	1-31 DEC	Previous Month		
							Difference								Difference
BRUNEI	6,642	7,453	7,453	4,916	843	949	-106	6,462	7,227	7,227	4,160	843	949	-106	
INDONESIA	186,031	190,297	190,297	258,736	29,614	13,605	+16,009	184,767	188,419	188,419	225,177	26,255	13,065	+13,190	
PHILIPPINES	13,052	10,071	10,071	12,041	0	0	0	12,438	10,071	10,071	10,321	0	0	0	
SABAH	1,905	5,758	5,758	1,397	0	0	0	1,905	4,944	4,944	1,397	0	0	0	
SARAWAK	4,893	1,883	1,883	2,143	0	0	0	4,893	1,883	1,883	2,143	0	0	0	
W-MALAYSIA	93	12,412	12,412	3,813	0	0	0	93	10,583	10,583	3,813	0	0	0	
EAST TIMOR	0	0	0	0	0	0	0	0	0	0	0	0	0	0	
TOTAL	212,616	227,874	227,874	283,046	30,457	14,554	+15,903	210,558	223,127	223,127	247,281	27,098	14,014	+13,084	
				+55,172							+24,154				

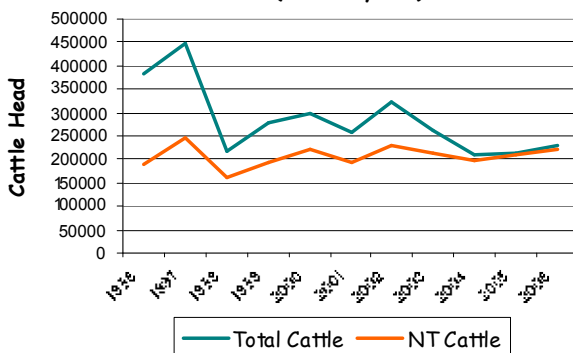
December at a glance

- 30,457 head of cattle through the Port of Darwin during December, 15,903 head more than November and 13,211 more than December last year.
- 2007 figures indicate 55,172 head of cattle more than 2006. Indonesia imported 68,439 head more in 2007 than 2006.
- 1657 goats were exported to Malaysia by air.

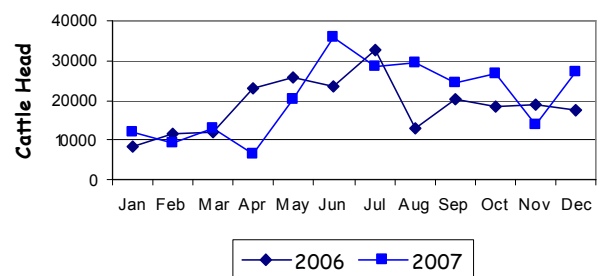
TOTAL Live Cattle Exports thru Port of Darwin
2006 v 2007



Live Cattle Exports thru the Port of Darwin
(last 10 years)



NT Live Cattle Exports thru Port of Darwin
2006 v 2007




PREVIOUS 8 YEARS

Total Cattle, Port of Darwin								NT Cattle, Port of Darwin							
1999	2000	2001	2002	2003	2004	2005	2006	1999	2000	2001	2002	2003	2004	2005	2006
280,011	299,179	258,127	322,602	260,618	211,042	212,616	229,654	192,441	222,669	193,172	229,796	212,520	205,204	210,558	225,413

OTHER LIVESTOCK EXPORTS VIA DARWIN PORT (includes NT and Interstate Stock)

Destination	Buffalo			Camels			Goats			Horses			Sheep			Pigs		
	2006	2007	1-31 DEC	2006	2007	1-31 DEC	2006	2007	1-31 DEC	2006	2007	1-31 DEC	2006	2007	1-31 DEC	2006	2007	1-31 DEC
BRUNEI	492	306	23	0	0	0	1253	1260	260	11	0	0	0	0	0	0	0	0
INDONESIA	820	2,865	186	0	0	0	57	2,257	0	0	9	0	0	0	0	0	0	0
PHILIPPINES	0	0	0	0	0	0	0	0	0	0	0	0	0	0	0	445	0	0
W-MALAYSIA	5,777	582	0	343	0	0	3702	2,312	1,657	0	0	0	781	825	0	0	0	0
SABAH	659	152	0	0	0	0	11284	7,349	0	5	0	0	0	0	0	0	0	0
SARAWAK	0	0	0	0	0	0	0	1,358	0	0	0	0	0	0	0	0	0	0
TOTAL	7,748	3,905	209	343	0	0	16296	15,131	1,917	16	9	0	781	825	0	445	0	0

NATIONAL CATTLE PRICES - W/E 20/12/07

JAPAN OX									MEDIUM STEER										
Estimated dressed weight price (cents/kg)									Estimated dressed weight price (cents/kg)										
SALEYARDS				O.T.HOOKS					SALEYARDS				O.T.HOOKS						
NSW	QLD	SA	AV (Aust)	NSW	QLD	SA	AV (Aust)	NSW	QLD	SA	AV (Aust)	NSW	QLD	SA	AV (Aust)	NSW	QLD	SA	AV (Aust)
This week	302	320	250	281	nq	nq	nq	nq	This week	287	308	nq	283	nq	nq	nq	nq		
Last week	314	311	262	298	308	296	nq	287	Last week	307	318	272	300	310	285	nq	285		
Year ago	281	303	246	261	nq	nq	nq	nq	Year ago	279	295	252	262	nq	nq	nq	nq		
US COW									TRADE STEER										
Estimated dressed weight price (cents/kg)									Estimated dressed weight price (cents/kg)										
SALEYARDS				O.T.HOOKS					SALEYARDS				O.T.HOOKS						
NSW	QLD	SA	AV (Aust)	NSW	QLD	SA	AV (Aust)	NSW	QLD	SA	AV (Aust)	NSW	QLD	SA	AV (Aust)	NSW	QLD	SA	AV (Aust)
This week	251	251	231	250	nq	nq	nq	nq	This week	327	316	260	309	nq	nq	nq	nq		
Last week	260	260	244	256	233	237	220	231	Last week	325	319	278	309	288	286	nq	295		
Year ago	241	241	181	181	nq	nq	nq	nq	Year ago	307	333	248	285	nq	nq	nq	nq		
LIVE EXPORT QUOTES									<p>Prices courtesy of Meat & Livestock Australia</p>  <p>www.mla.com.au</p>										
Estimated live weight price (cents/kg)																			
LIGHT STEERS (280-400 kg)				HEAVY STEERS (400+ kg)															
Darwin		Fremantle		Darwin		Fremantle													
This week	180		nq		170		130												
Last week	175		nq		160		130												
Year ago	185		nq		175		nq												

CURRENCY EXCHANGE RATES

Key Currencies 1AUD =	Current 31.12.2007	Previous month 1.12.2007	3 months ago 1.10.2007	1 Year ago 31.12.2006	Pre-devaluation 01.07.1997
Brunei Dollar	1.28415	1.30545	1.33246	1.23043	1.076
Indonesian Rupiah	8,322.26	8,337.19	8,125.37	7,200.55	1830
Philippine Peso	36,88124	37,59618	40,035.12	39,17207	19.84
Malaysian Ringgit	2.94327	2.98841	3.02450	2.81510	1.9
Euro	0.59795	0.60497	0.62514	0.59121	N/A
US Dollar	0.87896	0.88493	0.89053	0.78774	0.752

Prepared by the NT Department of Primary Industry, Fisheries and Mines

This publication contains commodity market information prepared for DPIFM staff use in strategic research and extension planning. While DPIFM exercise care in the compilation and preparation of this information, no responsibility is taken for its accuracy or for the completeness of any information that is reproduced from other sources. DPIFM denies any loss or damage to any person whether caused directly or indirectly by the use of any of the information provided.