



Pastoral Market Update

Live Cattle Exports via Darwin Port – **NOVEMBER 2007**

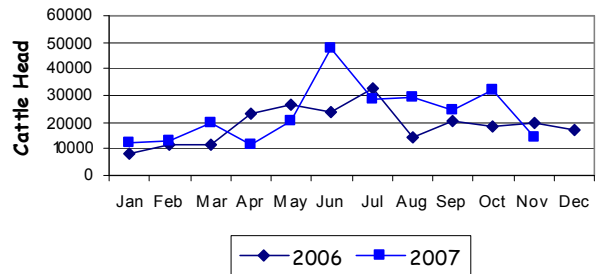
Please note that the "NT CATTLE" figures are NT cattle exported through the Port of Darwin only, some NT cattle are exported through interstate ports.

Destination	TOTAL CATTLE (including interstate)							# NT CATTLE						
	2005	2006	Last year 30/11/06	YTD 30/11/07	1-30 NOV	Previous Month	Difference	2005	2006	Last year 30/11/06	YTD 30/11/07	1-30 NOV	Previous Month	Difference
BRUNEI	6,642	7,453	6,517	4,073	949	0	+949	6,462	7,227	6,517	3,317	949	0	+949
INDONESIA	186,031	190,297	173,761	229,122	13,605	31,817	-18,212	184,767	188,419	171,883	198,922	13,065	26,817	-13,752
PHILIPPINES	13,052	10,071	10,071	12,041	0	0	0	12,438	10,071	10,071	10,321	0	0	0
SABAH	1,905	5,758	5,758	1,397	0	0	0	1,905	4,944	4,944	1,397	0	0	0
SARAWAK	4,893	1,883	1,883	2,143	0	0	0	4,893	1,883	1,883	2,143	0	0	0
W-MALAYSIA	93	12,412	12,412	3,813	0	0	0	93	10,583	10,583	3,813	0	0	0
EAST TIMOR	0	0	0	0	0	0	0	0	0	0	0	0	0	0
TOTAL	212,616	227,874	210,402	252,589	14,554	31,817	-17,263	210,558	223,127	205,881	220,183	14,014	26,817	-12,803
				+42,187							+14,302			

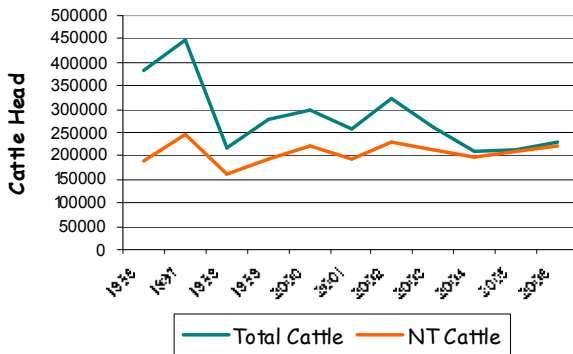
November at a glance

- 14,554 head of cattle through the Port of Darwin during November, 17,263 head less than October and 5,080 less than November last year.
- YTD figures indicate 42,187 head of cattle more than the same time last year.
- 104 buffalo and 595 goats were exported to Brunei.

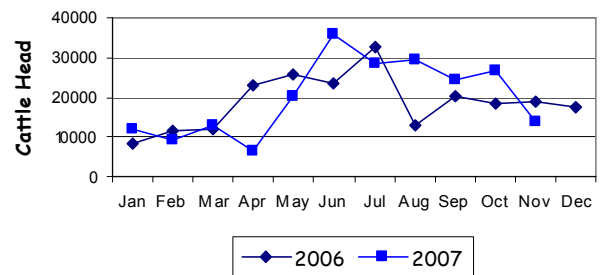
TOTAL Live Cattle Exports thru Port of Darwin
2006 v 2007



Live Cattle Exports thru the Port of Darwin
(last 10 years)



NT Live Cattle Exports thru Port of Darwin
2006 v 2007




PREVIOUS 8 YEARS

Total Cattle, Port of Darwin								NT Cattle, Port of Darwin							
1999	2000	2001	2002	2003	2004	2005	2006	1999	2000	2001	2002	2003	2004	2005	2006
280,011	299,179	258,127	322,602	260,618	211,042	212,616	229,654	192,441	222,669	193,172	229,796	212,520	205,204	210,558	225,413

OTHER LIVESTOCK EXPORTS VIA DARWIN PORT (includes NT and Interstate Stock)

Destination	Buffalo			Camels			Goats			Horses			Sheep			Pigs		
	2006	2007	1-30 NOV	2006	2007	1-30 NOV	2006	2007	1-30 NOV	2006	2007	1-30 NOV	2006	2007	1-30 NOV	2006	2007	1-30 NOV
BRUNEI	492	283	104	0	0	0	1253	1,000	595	11	0	0	0	0	0	0	0	0
INDONESIA	820	2,679	0	0	0	0	57	2,257	0	0	9	0	0	0	0	0	0	0
PHILIPPINES	0	0	0	0	0	0	0	0	0	0	0	0	0	0	0	445	0	0
W-MALAYSIA	5,777	582	0	343	0	0	3702	655	0	0	0	0	781	825	0	0	0	0
SABAH	659	152	0	0	0	0	11284	7,349	0	5	0	0	0	0	0	0	0	0
SARAWAK	0	0	0	0	0	0	0	1,358	0	0	0	0	0	0	0	0	0	0
TOTAL	7,748	3,696	104	343	0	0	16296	13,214	595	16	9	0	781	825	0	445	0	0

NATIONAL CATTLE PRICES - W/E 30/11/07

JAPAN OX									MEDIUM STEER										
Estimated dressed weight price (cents/kg)									Estimated dressed weight price (cents/kg)										
SALEYARDS				O.T.HOOKS					SALEYARDS				O.T.HOOKS						
NSW	QLD	SA	AV (Aust)	NSW	QLD	SA	AV (Aust)	NSW	QLD	SA	AV (Aust)	NSW	QLD	SA	AV (Aust)	NSW	QLD	SA	AV (Aust)
This week	302	307	nq	295	304	294	Nq	285	This week	294	306	281	296	306	283	Nq	283		
Last week	304	306	273	299	304	294	Nq	285	Last week	286	302	274	292	308	283	Nq	283		
Year ago	304	324	257	301	304	327	300	302	Year ago	281	320	275	291	308	304	295	298		
US COW									TRADE STEER										
Estimated dressed weight price (cents/kg)									Estimated dressed weight price (cents/kg)										
SALEYARDS				O.T.HOOKS					SALEYARDS				O.T.HOOKS						
NSW	QLD	SA	AV (Aust)	NSW	QLD	SA	AV (Aust)	NSW	QLD	SA	AV (Aust)	NSW	QLD	SA	AV (Aust)	NSW	QLD	SA	AV (Aust)
This week	254	260	248	249	229	235	220	216	This week	299	326	283	302	285	284	nq	290		
Last week	254	251	204	249	231	235	220	217	Last week	293	316	279	298	285	284	nq	290		
Year ago	221	240	195	217	240	243	207	208	Year ago	297	311	266	291	305	294	nq	297		
LIVE EXPORT QUOTES									<p>Prices courtesy of Meat & Livestock Australia</p>  <p>www.mla.com.au</p>										
Estimated live weight price (cents/kg)																			
LIGHT STEERS (280-400 kg)				HEAVY STEERS (400+ kg)															
Darwin		Fremantle		Darwin		Fremantle													
This week	175		nq		160		130												
Last week	175		nq		165		135												
Year ago	185		nq		170		nq												

CURRENCY EXCHANGE RATES

Key Currencies 1AUD =	Current 3.12.2007	Previous month 1.11.2007	3 months ago 1.9.2007	1 Year ago 1.12.2006	Pre-devaluation 01.07.1997
Brunei Dollar	1.30545	1.34912	1.26386	1.23043	1.076
Indonesian Rupiah	8,337.19	8,377.01	7,755.40	7,200.55	1830
Philippine Peso	37,59618	40.41926	38,19758	39,17207	19.84
Malaysian Ringgit	2.98841	3.07622	2.92117	2.81510	1.9
Euro	0.60497	0.63819	0.60110	0.59121	N/A
US Dollar	0.88493	0.91959	0.81897	0.78774	0.752

Prepared by the NT Department of Primary Industry, Fisheries and Mines

This publication contains commodity market information prepared for DPIFM staff use in strategic research and extension planning. While DPIFM exercise care in the compilation and preparation of this information, no responsibility is taken for its accuracy or for the completeness of any information that is reproduced from other sources. DPIFM denies any loss or damage to any person whether caused directly or indirectly by the use of any of the information provided.