



Pastoral Market Update

Live Cattle Exports via Darwin Port – **SEPTEMBER 2007**

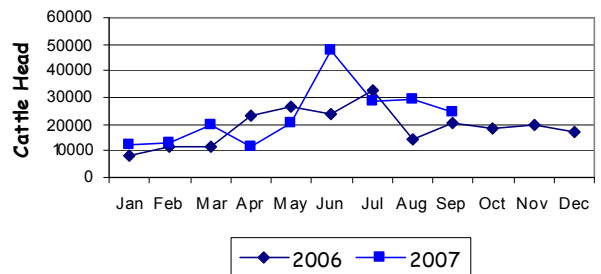
Please note that the "NT CATTLE" figures are NT cattle exported through the Port of Darwin only, some NT cattle are exported through interstate ports.

Destination	TOTAL CATTLE (including interstate)							# NT CATTLE						
	2005	2006	Last year 30/9/06	YTD 30/9/07	1-30 SEPT	Previous Month	Difference	2005	2006	Last year 30/9/06	YTD 30/9/07	1-30 SEPT	Previous Month	Difference
BRUNEI	6,642	7,453	4,875	3,124	0	416	-416	6,642	7,227	4,875	2,368	0	416	-416
INDONESIA	186,031	190,297	147,208	183,700	22,365	17,587	+4,778	184,767	188,419	145,330	159,040	22,365	17,587	+4,778
PHILIPPINES	13,052	10,071	10,071	12,041	0	7,624	-7,624	12,438	10,071	10,071	10,321	0	7,624	-7,624
SABAH	1,905	5,758	2,141	1,397	1,042	0	+1,042	1,905	4,944	1,327	1,397	1,042	0	+1,042
SARAWAK	4,893	1,883	1,883	2,143	1,150	0	+1,150	4,893	1,883	1,883	2,143	1,150	0	+1,150
W-MALAYSIA	93	12,412	6,204	3,813	0	03,813	-3,813	93	10,583	5,316	3,813	0	3,813	-3,813
EAST TIMOR	0	0	0	0	0	0	0	0	0	0	0	0	0	0
TOTAL	212,616	227,874	172,382	206,218	24,557	29,440	-4,883	210,558	223,127	168,802	179,352	24,557	29,440	-4,883
				+33,836							+10,550			

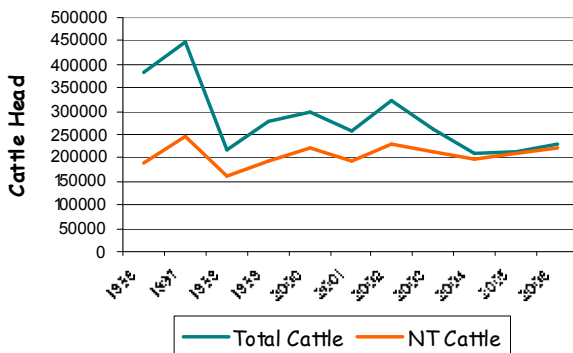
SEPTEMBER at a glance

- 24,557 head of cattle through the Port of Darwin during September, 4,883 head less than August and 4,129 more than September last year.
- YTD figures indicate 33,836 head of cattle more than the same time last year.
- 2,367 goats were exported to Sabah and 1,358 to Sarawak.

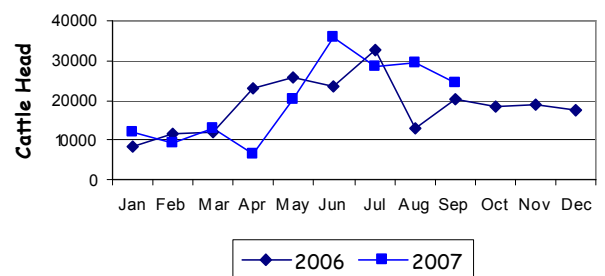
TOTAL Live Cattle Exports thru Port of Darwin 2006 v 2007



Live Cattle Exports thru the Port of Darwin (last 10 years)



NT Live Cattle Exports thru Port of Darwin 2006 v 2007




PREVIOUS 8 YEARS

Total Cattle, Port of Darwin								NT Cattle, Port of Darwin							
1999	2000	2001	2002	2003	2004	2005	2006	1999	2000	2001	2002	2003	2004	2005	2006
280,011	299,179	258,127	322,602	260,618	211,042	212,616	229,654	192,441	222,669	193,172	229,796	212,520	205,204	210,558	225,413

OTHER LIVESTOCK EXPORTS VIA DARWIN PORT (includes NT and Interstate Stock)

Destination	Buffalo			Camels			Goats			Horses			Sheep			Pigs		
	2006	2007	1-30 SEP	2006	2007	1-30 SEP	2006	2007	1-30 SEP	2006	2007	1-30 SEP	2006	2007	1-30 SEP	2006	2007	1-30 SEP
BRUNEI	492	179	0	0	0	0	1253	1,000	0	11	0	0	0	0	0	0	0	0
INDONESIA	820	2,204	300	0	0	0	57	2,257	0	0	9	0	0	0	0	0	0	
PHILIPPINES	0	0	0	0	0	0	0	0	0	0	0	0	0	0	0	445	0	
W-MALAYSIA	5,777	582	0	343	0	0	3702	655	0	0	0	0	781	825	0	0	0	
SABAH	659	152	77	0	0	0	11284	7,349	2,367	5	0	0	0	0	0	0	0	
SARAWAK	0	0	0	0	0	0	0	1,358	1,358	0	0	0	0	0	0	0	0	
TOTAL	7,748	3,117	377	343	0	0	16296	12,619	3,725	16	9	0	781	825	0	445	0	

NATIONAL CATTLE PRICES - W/E 31/8/07

JAPAN OX									MEDIUM STEER										
Estimated dressed weight price (cents/kg)									Estimated dressed weight price (cents/kg)										
SALEYARDS				O.T.HOOKS					SALEYARDS				O.T.HOOKS						
NSW	QLD	SA	AV (Aust)	NSW	QLD	SA	AV (Aust)	NSW	QLD	SA	AV (Aust)	NSW	QLD	SA	AV (Aust)	NSW	QLD	SA	AV (Aust)
This week	303	324	274	313	308	311	Nq	307	This week	323	330	334	298	308	300	Nq	300		
Last week	318	344	287	3423	315	324	Nq	313	Last week	328	337	319	310	315	315	Nq	305		
Year ago	330	345	314	332	313	331	313	322	Year ago	345	343	306	320	311	317	311	316		
US COW									TRADE STEER										
Estimated dressed weight price (cents/kg)									Estimated dressed weight price (cents/kg)										
SALEYARDS				O.T.HOOKS					SALEYARDS				O.T.HOOKS						
NSW	QLD	SA	AV (Aust)	NSW	QLD	SA	AV (Aust)	NSW	QLD	SA	AV (Aust)	NSW	QLD	SA	AV (Aust)	NSW	QLD	SA	AV (Aust)
This week	254	247	239	245	234	251	200	226	This week	309	304	289	306	300	295	383	320		
Last week	271	254	256	260	241	261	235	239	Last week	313	318	279	309	301	309	383	324		
Year ago	374	285	252	267	267	274	252	252	Year ago	335	344	300	336	321	306	310	335		
LIVE EXPORT QUOTES									<p>Prices courtesy of Meat & Livestock Australia</p>  <p>www.mla.com.au</p>										
Estimated live weight price (cents/kg)																			
LIGHT STEERS (280-400 kg)				HEAVY STEERS (400+ kg)															
Darwin		Fremantle		Darwin		Fremantle													
This week	175		nq	165		nq													
Last week	175		nq	165		nq													
Year ago	185		nq	170		nq													

CURRENCY EXCHANGE RATES

Key Currencies 1AUD =	Current 2.10.2007	Previous month 1.9.2007	3 months ago 1.7.2007	1 Year ago 1.10.2006	Pre-devaluation 01.07.1997
Brunei Dollar	1.33246	1.26386	1.31919	1.19442	1.076
Indonesian Rupiah	8,125.37	7,755.40	7,730.51	6,881.29	1830
Philippine Peso	40.03512	38.19758	39,35573	37,59232	19.84
Malaysian Ringgit	3.02450	2.92117	2.95137	2.75680	1.9
Euro	0.62514	0.60110	0.60851	0.58913	N/A
US Dollar	0.89053	0.85589	0.85654	0.74662	0.752

Prepared by the NT Department of Primary Industry, Fisheries and Mines

This publication contains commodity market information prepared for DPIFM staff use in strategic research and extension planning. While DPIFM exercise care in the compilation and preparation of this information, no responsibility is taken for its accuracy or for the completeness of any information that is reproduced from other sources. DPIFM denies any loss or damage to any person whether caused directly or indirectly by the use of any of the information provided.