



Pastoral Market Update

Live Cattle Exports via Darwin Port – **DECEMBER 2005**

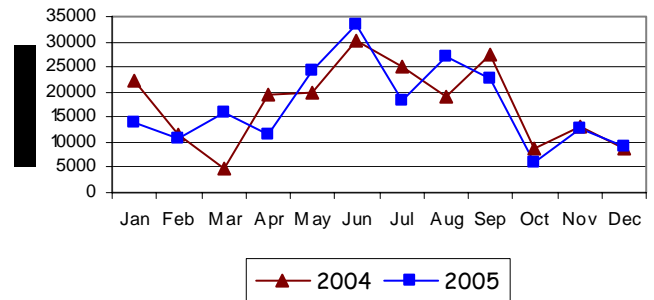
Please note that the "NT CATTLE" figures are NT cattle exported through the Port of Darwin only, some NT cattle are exported through interstate ports.

Destination	TOTAL CATTLE (including interstate)							# NT CATTLE						
	2003	2004	Last year 31/12/04	YTD 31/12/05	1-31 Dec	Previous Month	Difference	2003	2004	Last year 31/12/04	YTD 31/12/05	1-31 Dec	Previous Month	Difference
BRUNEI	16,572	14,101	14,101	6,642	1,434	261	+1,173	13,574	10,492	10,492	6,462	1,434	261	+1,173
INDONESIA	182,624	158,600	158,600	186,031	7,662	12,153	-4,491	145,274	150,048	150,048	184,767	7,662	12,153	-4,491
PHILIPPINES	51,792	31,623	31,623	13,052	0	0	0	46,243	29,393	29,393	12,438	0	0	0
SABAH	224	304	304	1,905	0	340	-340	224	304	304	1,905	0	340	-340
SARAWAK	320	0	0	4,893	0	0	0	92	0	0	4,893	0	0	0
W-MALAYSIA	9,028	6,379	6,379	93	0	0	0	7,055	6,272	6,272	93	0	0	0
EAST TIMOR	58	35	35	0	0	0	0	58	0	0	0	0	0	0
TOTAL	260,618	211,042	211,042	212,616	9,096	12,754	-3,658	212,520	205,204	205,204	210,558	9,096	12,754	-3,658
				+1,574							+5,354			

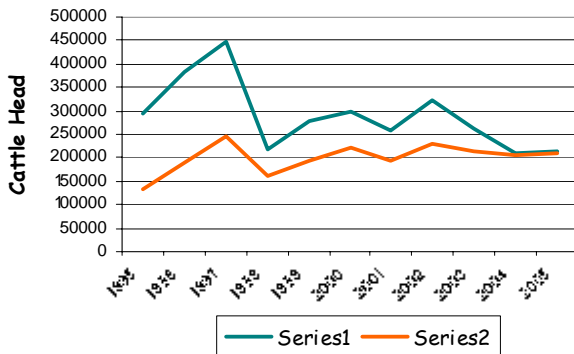
"December at a glance"

- 9,096 head of cattle through the Port of Darwin during December, 3,658 head less than November and 165 more than December last year.
- YTD figures indicate 1,574 head more than the same time last year.
- No interstate cattle through the Port of Darwin in December.
- 728 slaughter goats from Qld were exported to Brunei
- .440 buffalo were exported to Brunei and 100 buffalo to Indonesia.

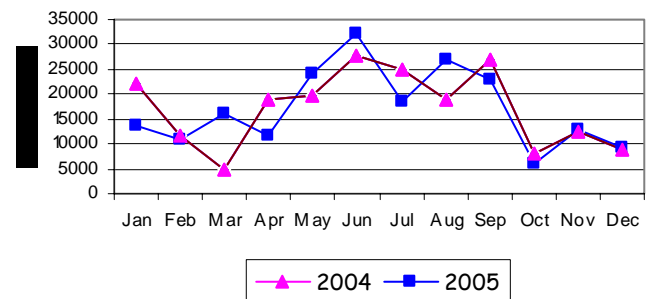
TOTAL Live Cattle Exports thru Port of Darwin 2004 v 2005



Live Cattle Exports thru the Port of Darwin (last 10 years)



NT Live Cattle Exports thru Port of Darwin 2004 v 2005




PREVIOUS 7 YEARS

Total Cattle, Port of Darwin							NT Cattle, Port of Darwin								
1998	1999	2000	2001	2002	2003	2004	2005	1998	1999	2000	2001	2002	2003	2004	2005
219,439	280,011	299,179	258,127	322,602	260,618	211,042	212,616	160,412	192,441	222,669	193,172	229,796	212,520	205,204	210,558

**OTHER LIVESTOCK EXPORTS VIA
DARWIN PORT (includes NT and
Interstate Stock)**

Destination	Buffalo			Camels			Goats			Deer			Horses			Sheep			Pigs			
	2004	2005	1-31 Dec	2004	2005	1-31 Dec	2004	2005	1-31 Dec	2004	2005	1-31 Dec	2004	2005	1-31 Dec	2004	2005	1-31 Dec	2004	2005	1-31 Dec	
BRUNEI	2,279	816	440	115	0	34	3,680	1,097	728	30	0	0	0	0	0	0	0	0	0	0	0	0
INDONESIA	0	100	100	0	0	0	0	10	0	0	0	0	3	9	9	0	0	0	0	0	0	0
PHILIPPINES	0	0	0	0	0	0	100	0	0	0	0	0	0	0	0	0	0	0	0	640	0	0
W-MALAYSIA	1,556	672	0	0	0	0	725	0	0	0	0	0	4	0	0	0	0	0	0	0	0	0
SABAH	0	314	0	0	0	0	217	3,016	0	0	0	0	0	18	0	0	0	0	0	0	0	0
TOTAL	3,835	1,902	540	115	34	0	4,722	4,113	728	30	0	0	7	27	0	0	0	0	0	640	450	0

NATIONAL CATTLE PRICES - W/E 25/11/05

JAPAN OX									MEDIUM STEER										
Estimated dressed weight price (cents/kg)									Estimated dressed weight price (cents/kg)										
SALEYARDS				O.T.HOOKS					SALEYARDS				O.T.HOOKS						
NSW	QLD	SA	AV (Aust)	NSW	QLD	SA	AV (Aust)	NSW	QLD	SA	AV (Aust)	NSW	QLD	SA	AV (Aust)	NSW	QLD	SA	AV (Aust)
This week	343	342	317	337	328	343	345	336	This week	336	349	330	338	321	339	341	334		
Last week	341	335	325	334	328	343	345	336	Last week	330	344	327	338	334	339	341	327		
Year ago	346	356	312	343	331	358	308	328	Year ago	344	356	315	348	348	353	303	320		
US COW									TRADE STEER										
Estimated dressed weight price (cents/kg)									Estimated dressed weight price (cents/kg)										
SALEYARDS				O.T.HOOKS					SALEYARDS				O.T.HOOKS						
NSW	QLD	SA	AV (Aust)	NSW	QLD	SA	AV (Aust)	NSW	QLD	SA	AV (Aust)	NSW	QLD	SA	AV (Aust)	NSW	QLD	SA	AV (Aust)
This week	305	298	295	300	275	291	273	264	This week	368	369	341	363	336	319	330	346		
Last week	307	292	298	301	275	291	273	264	Last week	376	366	353	365	336	314	330	349		
Year ago	329	327	280	314	280	280	263	267	Year ago	373	342	325	359	343	337	304	327		
LIVE EXPORT QUOTES									<p align="center">Prices courtesy of Meat & Livestock Australia</p>  <p align="center">www.mla.com.au</p>										
Estimated live weight price (cents/kg)																			
LIGHT STEERS (280-400 kg)				HEAVY STEERS (400+ kg)															
Darwin		Fremantle		Darwin		Fremantle													
This week	175		nq	160		nq													
Last week	165		155	160		150													
Year ago	185		nq	185		nq													

CURRENCY EXCHANGE RATES

Key Currencies 1AUD =	Current 31/12.2005	Previous month 30/11.2005	3 months ago 30.09.2005	1 Year ago 31/12.2004	Pre-devaluation 01.07.1997
Brunei Dollar	1.23393	1.26318	1.28924	1.2834	1.076
Indonesian Rupiah	7,185.93	7407.34	7852.38	7270.38	1830
Philippine Peso	38.76413	39.93826	42.69084	43.865	19.84
Malaysian Ringgit	2.76414	2.78178	2.86534	2.9609	1.9
Euro	0.61643	0.62822	0.63132	0.5719	N/A
US Dollar	0.72979	0.73629	0.76030	0.7801	0.752

Prepared by the NT Department of Primary Industry, Fisheries and Mines

This publication contains commodity market information prepared for DPIFM staff use in strategic research and extension planning. While DPIFM exercise care in the compilation and preparation of this information, no responsibility is taken for its accuracy or for the completeness of any information that is reproduced from other sources. DPIFM denies any loss or damage to any person whether caused directly or indirectly by the use of any of the information provided.