



Pastoral Market Update

Live Cattle Exports via Darwin Port – **NOVEMBER 2005**

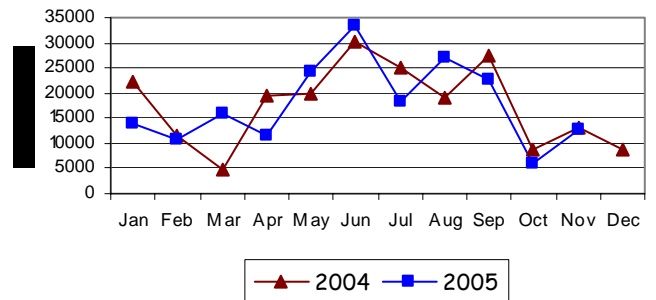
Please note that the "NT CATTLE" figures are NT cattle exported through the Port of Darwin only, some NT cattle are exported through interstate ports.

Destination	TOTAL CATTLE (including interstate)						# NT CATTLE					
	2003	2004	Last year 30/11/04	YTD 30/11/05	1-30 Nov	Previous Month	2003	2004	Last year 30/11/04	YTD 30/11/05	1-30 Nov	Previous Month
BRUNEI	16,572	14,101	10,796	5,208	261	661	13,574	10,492	10,492	5,028	261	661
INDONESIA	182,624	158,600	152,974	178,369	12,153	3568	145,274	150,048	150,048	177,105	12,153	3,568
PHILIPPINES	51,792	31,623	31,623	13,052	0	0	46,243	29,393	29,393	12,438	0	0
SABAH	224	304	304	1,905	340	0	224	304	304	1,905	340	0
SARAWAK	320	0	0	4,893	0	1900	92	0	0	4,893	0	1,900
W-MALAYSIA	9,028	6,379	6,379	93	0	0	7,055	6,272	6,272	93	0	0
EAST TIMOR	58	35	35	0	0	0	58	0	0	0	0	0
TOTAL	260,618	211,042	202,111	203,520	12,754	6,129	212,520	205,204	196,509	201,462	12,754	6,129
				+1,409						+4,953		

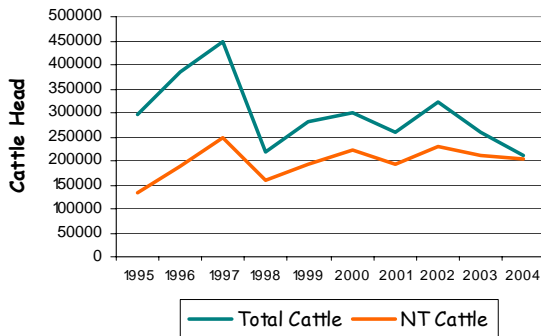
"November at a glance"

- 12,754 head of cattle through the Port of Darwin during November, 6,129 head more than October and 458 less than November last year.
- YTD figures indicate 1,409 head more than the same time last year.
- No interstate cattle through the Port of Darwin in November.
- 1,491 breeder goats from Qld were exported to Sabah
- .18 horses to Sabah and 73 buffalo to Brunei.

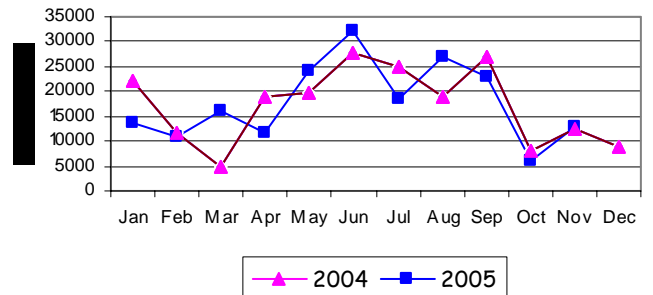
TOTAL Live Cattle Exports thru Port of Darwin 2004 v 2005



Live Cattle Exports thru the Port of Darwin (last 10 years)



NT Live Cattle Exports thru Port of Darwin 2004 v 2005




PREVIOUS 7 YEARS

Total Cattle, Port of Darwin							NT Cattle, Port of Darwin								
1997	1998	1999	2000	2001	2002	2003	2004	1997	1998	1999	2000	2001	2002	2003	2004
448,196	219,439	280,011	299,179	258,127	322,602	260,618	211,042	246,389	160,412	192,441	222,669	193,172	229,796	212,520	205,204

OTHER LIVESTOCK EXPORTS VIA DARWIN PORT (includes NT and Interstate Stock)

Destination	Buffalo			Camels			Goats			Deer			Horses			Sheep			Pigs		
	2004	2005	1-30 Nov	2004	2005	1-30 Nov	2004	2005	1-30 Nov	2004	2005	1-30 Nov	2004	2005	1-30 Nov	2004	2005	1-30 Nov	2004	2005	1-30 Nov
BRUNEI	2,279	376	73	115	0	34	3,680	369	0	30	0	0	0	0	0	0	0	0	0	0	0
INDONESIA	0	0	0	0	0	0	0	10	0	0	0	0	3	9	9	0	0	0	0	0	0
PHILIPPINES	0	0	0	0	0	0	100	0	0	0	0	0	0	0	0	0	0	0	640	0	0
W-MALAYSIA	1,556	672	0	0	0	0	725	0	0	0	0	0	4	0	0	0	0	0	0	0	0
SABAH	0	314	0	0	0	0	217	3,016	1,491	0	0	0	0	18	18	0	0	0	0	0	0
TOTAL	3,835	1,362	73	115	34	0	4,722	3,395	1,491	30	0	0	7	27	18	0	0	0	640	450	0

NATIONAL CATTLE PRICES - W/E 25/11/05

JAPAN OX									MEDIUM STEER										
Estimated dressed weight price (cents/kg)									Estimated dressed weight price (cents/kg)										
SALEYARDS				O.T.HOOKS					SALEYARDS				O.T.HOOKS						
NSW	QLD	SA	AV (Aust)	NSW	QLD	SA	AV (Aust)	NSW	QLD	SA	AV (Aust)	NSW	QLD	SA	AV (Aust)	NSW	QLD	SA	AV (Aust)
This week	343	342	317	337	328	343	345	336	This week	336	349	330	338	321	339	341	334		
Last week	341	335	325	334	328	343	345	336	Last week	330	344	327	338	334	339	341	327		
Year ago	346	356	312	343	331	358	308	328	Year ago	344	356	315	348	348	353	303	320		
US COW									TRADE STEER										
Estimated dressed weight price (cents/kg)									Estimated dressed weight price (cents/kg)										
SALEYARDS				O.T.HOOKS					SALEYARDS				O.T.HOOKS						
NSW	QLD	SA	AV (Aust)	NSW	QLD	SA	AV (Aust)	NSW	QLD	SA	AV (Aust)	NSW	QLD	SA	AV (Aust)	NSW	QLD	SA	AV (Aust)
This week	305	298	295	300	275	291	273	264	This week	368	369	341	363	336	319	330	346		
Last week	307	292	298	301	275	291	273	264	Last week	376	366	353	365	336	314	330	349		
Year ago	329	327	280	314	280	280	263	267	Year ago	373	342	325	359	343	337	304	327		
LIVE EXPORT QUOTES									<p>Prices courtesy of Meat & Livestock Australia</p>  <p>www.mla.com.au</p>										
Estimated <u>live</u> weight price (cents/kg)																			
LIGHT STEERS (280-400 kg)				HEAVY STEERS (400+ kg)															
Darwin		Fremantle		Darwin		Fremantle													
This week	175		nq		160		nq												
Last week	165		155		160		150												
Year ago	185		nq		185		nq												

CURRENCY EXCHANGE RATES

Key Currencies 1AUD =	Current 30/11.2005	Previous month 31/10.2005	3 months ago 31.08.2005	1 Year ago 30/11.2004	Pre-devaluation 01.07.1997
Brunei Dollar	1.26318	1.2707	1.27356	1.2635	1.076
Indonesian Rupiah	7,407.34	7441.70	7868.16	7078.24	1830
Philippine Peso	39.93826	40.09654	42.529605	43.0647	19.84
Malaysian Ringgit	2.78178	2.77312	2.84718	2.9058	1.9
Euro	0.62822	0.61432	0.61182	0.5701	N/A
US Dollar	0.73629	0.7426	0.75474	0.7641	0.752

Prepared by the NT Department of Business, Industry and Resource Development.

This publication contains commodity market information prepared for DBIRD staff use in strategic research and extension planning. While DBIRD exercise care in the compilation and preparation of this information, no responsibility is taken for its accuracy or for the completeness of any information that is reproduced from other sources. DBIRD denies any loss or damage to any person whether caused directly or indirectly by the use of any of the information provided.