



Pastoral Market Update

Live Cattle Exports via Darwin Port – **OCTOBER 2005**

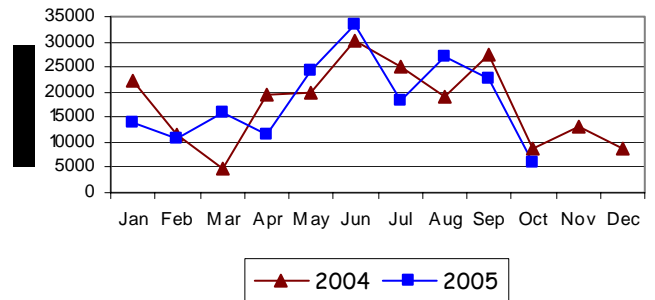
Please note that the "NT CATTLE" figures are NT cattle exported through the Port of Darwin only, some NT cattle are exported through interstate ports.

Destination	TOTAL CATTLE (including interstate)							# NT CATTLE						
	2003	2004	Last year 31/10/04	YTD 31/10/05	1-31 Oct	Previous Month	Difference	2003	2004	Last year 31/10/04	YTD 31/10/05	1-31 Oct	Previous Month	Difference
BRUNEI	16,572	14,101	9,998	4,767	661	0	+661	13,574	10,492	9,684	4,767	661	0	+661
INDONESIA	182,624	158,600	140,570	166,216	3568	22,804	-19,236	145,274	150,048	138,358	164,952	3,568	22,804	-19,236
PHILIPPINES	51,792	31,623	31,623	13,052	0	0	0	46,243	29,393	29,393	12,438	0	0	0
SABAH	224	304	304	1,565	0	0	0	224	304	304	1,565	0	0	0
SARAWAK	320	0	0	4,893	1,900	0	+1,900	92	0	0	4,893	1,900	0	+1,900
W-MALAYSIA	9,028	6,379	6,379	93	0	0	0	7,055	6,272	6,272	93	0	0	0
EAST TIMOR	58	35	35	0	0	0	0	58	0	0	0	0	0	0
TOTAL	260,618	211,042	188,899	190,586	6,129	22,804	-16,675	212,520	205,204	184,011	188,708	6,129	22,804	-16,675
				+1,687							+4,697			

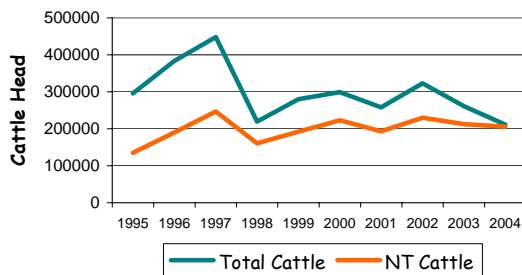
"October at a glance"

- 6,129 head of cattle through the Port of Darwin during October, 16,675 head less than September and 2,510 less than October last year.
- YTD figures indicate 1,687 head more than the same time last year.
- No interstate cattle through the Port of Darwin in October.
- 150 buffalo, 369 goats and 34 camels were exported to Brunei
- 9 horses and 10 goats exported to Indonesia.

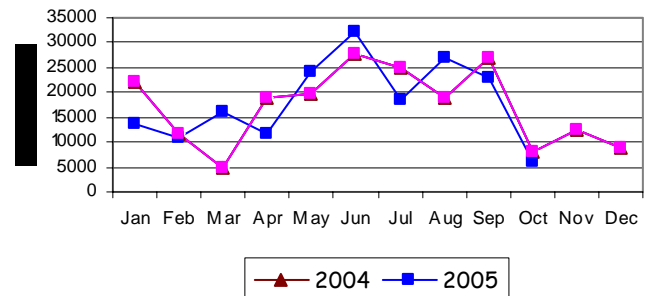
TOTAL Live Cattle Exports thru Port of Darwin 2004 v 2005



Live Cattle Exports thru the Port of Darwin (last 10 years)



NT Live Cattle Exports thru Port of Darwin 2004 v 2005




PREVIOUS 7 YEARS

Total Cattle, Port of Darwin							NT Cattle, Port of Darwin								
1997	1998	1999	2000	2001	2002	2003	2004	1997	1998	1999	2000	2001	2002	2003	2004
448,196	219,439	280,011	299,179	258,127	322,602	260,618	211,042	246,389	160,412	192,441	222,669	193,172	229,796	212,520	205,204

OTHER LIVESTOCK EXPORTS VIA DARWIN PORT (includes NT and Interstate Stock)

Destination	Buffalo			Camels			Goats			Deer			Horses			Sheep			Pigs		
	2004	2005	1-31 Oct	2004	2005	1-31 Oct	2004	2005	1-31 Oct	2004	2005	1-31 Oct	2004	2005	1-31 Oct	2004	2005	1-31 Oct	2004	2005	1-31 Oct
BRUNEI	2,279	303	150	115	0	34	3,680	369	369	30	0	0	0	0	0	0	0	0	0	0	0
INDONESIA	0	0	0	0	0	0	0	10	10	0	0	0	3	9	9	0	0	0	0	0	0
PHILIPPINES	0	0	0	0	0	0	100	0	0	0	0	0	0	0	0	0	0	0	640	0	0
W-MALAYSIA	1,556	672	0	0	0	0	725	0	0	0	0	0	4	0	0	0	0	0	0	0	0
SABAH	0	314	0	0	0	0	217	1525	87	0	0	0	0	0	0	0	0	0	0	0	0
TOTAL	3,835	1,289	150	115	34	34	4,722	1904	466	30	0	0	7	9	9	0	0	0	640	450	0

NATIONAL CATTLE PRICES - W/E 31/10/05

JAPAN OX									MEDIUM STEER										
Estimated dressed weight price (cents/kg)									Estimated dressed weight price (cents/kg)										
SALEYARDS				O.T.HOOKS					SALEYARDS				O.T.HOOKS						
NSW	QLD	SA	AV (Aust)	NSW	QLD	SA	AV (Aust)	NSW	QLD	SA	AV (Aust)	NSW	QLD	SA	AV (Aust)	NSW	QLD	SA	AV (Aust)
This week	349	323	329	333	310	335	348	333	This week	346	346	336	342	317	331	344	333		
Last week	346	3331	332	337	310	343	348	335	Last week	354	344	340	348	317	335	355	344		
Year ago	349	368	298	355	331	358	308	328	Year ago	347	363	299	350	348	353	303	320		
US COW									TRADE STEER										
Estimated dressed weight price (cents/kg)									Estimated dressed weight price (cents/kg)										
SALEYARDS				O.T.HOOKS					SALEYARDS				O.T.HOOKS						
NSW	QLD	SA	AV (Aust)	NSW	QLD	SA	AV (Aust)	NSW	QLD	SA	AV (Aust)	NSW	QLD	SA	AV (Aust)	NSW	QLD	SA	AV (Aust)
This week	300	289	302	291	270	286	273	263	This week	381	371	385	379	334	313	343	353		
Last week	312	292	308	298	271	300	273	266	Last week	396	373	379	387	336	321	343	354		
Year ago	332	331	269	316	280	326	263	267	Year ago	365	387	329	354	343	337	304	327		
LIVE EXPORT QUOTES									<p>Prices courtesy of Meat & Livestock Australia</p>  <p>www.mla.com.au</p>										
Estimated live weight price (cents/kg)																			
LIGHT STEERS (280-400 kg)				HEAVY STEERS (400+ kg)															
Darwin		Fremantle		Darwin		Fremantle													
This week	165		nq	155		nq													
Last week	165		155	155		150													
Year ago	185		nq	185		nq													

CURRENCY EXCHANGE RATES

Key Currencies 1AUD =	Current 31/10.2005	Previous month 30/09.2005	3 months ago 31.07.2005	1 Year ago 31/10.2004	Pre-devaluation 01.07.1997
Brunei Dollar	1.27007	1.28924	1.28656	1.2618	1.076
Indonesian Rupiah	7441.70	7852.38	7407.18	6825.76	1830
Philippine Peso	40.09654	42.69084	42.45115	42.5745	19.84
Malaysian Ringgit	2.77312	2.86534	2.87820	2.8593	1.9
Euro	0.61432	0.63132	0.61867	0.5881	N/A
US Dollar	0.7426	0.76030	0.75738	0.7522	0.752

Prepared by the NT Department of Primary Industry, Fisheries and Mines.

This publication contains commodity market information prepared for DPIFM staff use in strategic research and extension planning. While DPIFM exercise care in the compilation and preparation of this information, no responsibility is taken for its accuracy or for the completeness of any information that is reproduced from other sources. DPIFM denies any loss or damage to any person whether caused directly or indirectly by the use of any of the information provided.