



Pastoral Market Update

Live Cattle Exports via Darwin Port – **APRIL 2005**

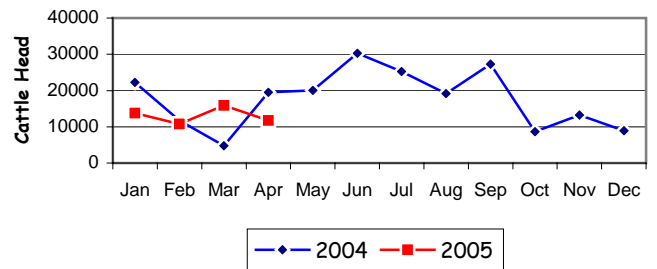
Please note that the "NT CATTLE" figures are NT cattle exported through the Port of Darwin only, some NT cattle are exported through interstate ports.

Destination	TOTAL CATTLE (including interstate)						# NT CATTLE							
	2003	2004	Last year 30/04/04	YTD 30/04/05	1-30 Apr	Previous Month Difference	2003	2004	Last year 30/04/04	YTD 30/04/05	1-30 Apr	Previous Month Difference		
BRUNEI	16,572	14,101	3,246	1,559	1,559	0	+1,559	13,574	10,492	3,246	1,559	1,559	0	+1,559
INDONESIA	182,624	158,600	43,126	48,839	8,541	15,892	-7,351	145,274	150,048	42,409	48,839	8,541	15,892	-7,351
PHILIPPINES	51,792	31,623	10,948	1,601	1,601	0	+1,601	46,243	29,393	10,948	1,601	1,601	0	+1,601
SABAH	224	304	0	0	0	0	0	224	304	0	0	0	0	0
SARAWAK	320	0	0	0	0	0	0	92	0	0	0	0	0	0
W-MALAYSIA	9,028	6,379	893	93	0	0	0	7,055	6,272	893	93	0	0	0
EAST TIMOR	58	35	0	0	0	0	0	58	0	0	0	0	0	0
TOTAL	260,618	211,042	58,203	52,092	11,701	15,892	-4,191	212,520	205,204	57,496	52,092	11,701	15,892	-4,191
				-6,111							-5,404			

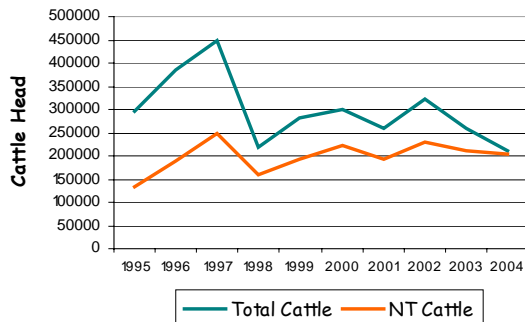
"April at a glance"

- 11,701 head of cattle through the Port of Darwin during April, 4,191 head less than March and 7,776 less than April last year.
- YTD figures indicate 6,121 head behind the same time last year!
- No interstate cattle through the Port of Darwin for the first 4 months of 2005.

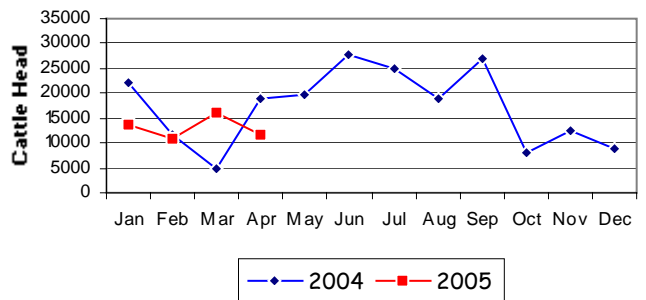
TOTAL Live Cattle Exports thru Port of Darwin 2004 v 2005



Live Cattle Exports thru the Port of Darwin (last 10 years)



NT Live Cattle Exports thru Port of Darwin 2004 v 2005




PREVIOUS 7 YEARS

Total Cattle, Port of Darwin							NT Cattle, Port of Darwin								
1997	1998	1999	2000	2001	2002	2003	2004	1997	1998	1999	2000	2001	2002	2003	2004
448,196	219,439	280,011	299,179	258,127	322,602	260,618	211,042	246,389	160,412	192,441	222,669	193,172	229,796	212,520	205,204

OTHER LIVESTOCK EXPORTS VIA DARWIN PORT (includes NT and Interstate Stock)

Destination	Buffalo			Camels			Goats			Deer			Horses			Sheep			Pigs		
	2004	2005	1-30 Apr	2004	2005	1-30 Apr	2004	2005	1-30 Apr	2004	2005	1-30 Apr	2004	2005	1-30 Apr	2004	2005	1-30 Apr	2004	2005	1-30 Apr
BRUNEI	2,279	0	153	115	0	0	3,680	0	0	30	0	0	0	0	0	0	0	0	0	0	0
INDONESIA	0	0	0	0	0	0	0	0	0	0	0	0	3	0	0	0	0	0	0	0	0
PHILIPPINES	0	0	0	0	0	0	100	0	0	0	0	0	0	0	0	0	0	0	640	0	0
W-MALAYSIA	1,556	672	0	0	0	0	725	0	0	0	0	0	4	0	0	0	0	0	0	0	0
E-MALAYSIA	0	0	0	0	0	0	217	0	0	0	0	0	0	0	0	0	0	0	0	0	0
TOTAL	3,835	672	153	115	0	0	4,722	0	0	30	0	0	7	0	0	0	0	0	640	0	0

NATIONAL CATTLE PRICES - W/E 22/04/05

JAPAN OX									MEDIUM STEER										
Estimated dressed weight price (cents/kg)									Estimated dressed weight price (cents/kg)										
SALEYARDS				O.T.HOOKS					SALEYARDS				O.T.HOOKS						
NSW	QLD	SA	AV (Aust)	NSW	QLD	SA	AV (Aust)	NSW	QLD	SA	AV (Aust)	NSW	QLD	SA	AV (Aust)	NSW	QLD	SA	AV (Aust)
This week	302	305	326	310	312	307	323	313	This week	301	305	320	307	310	305	319	312		
Last week	309	310	322	309	317	307	323	312	Last week	296	309	324	307	312	305	319	310		
Year ago	290	299	287	293	284	296	295	290	Year ago	284	299	291	289	nq	nq	nq	nq		
US COW									TRADE STEER										
Estimated dressed weight price (cents/kg)									Estimated dressed weight price (cents/kg)										
SALEYARDS				O.T.HOOKS					SALEYARDS				O.T.HOOKS						
NSW	QLD	SA	AV (Aust)	NSW	QLD	SA	AV (Aust)	NSW	QLD	SA	AV (Aust)	NSW	QLD	SA	AV (Aust)	NSW	QLD	SA	AV (Aust)
This week	250	265	275	258	251	255	257	244	This week	345	313	370	347	307	272	300	316		
Last week	250	264	260	256	255	257	260	243	Last week	342	325	375	343	309	272	300	314		
Year ago	243	265	251	254	235	nq	230	224	Year ago	310	312	318	311	284	280	255	287		
LIVE EXPORT QUOTES									<p>Prices courtesy of Meat & Livestock Australia</p>  <p>www.mla.com.au</p>										
Estimated <u>live</u> weight price (cents/kg)																			
LIGHT STEERS (280-400 kg)				HEAVY STEERS (400+ kg)															
Darwin		Fremantle		Darwin		Fremantle													
This week	160		170		145		145												
Last week	165		160		145		150												
Year ago	155		nq		155		1nq												

CURRENCY EXCHANGE RATES

Key Currencies 1AUD =	Current 5.5.05	Previous week 28.4.05	4 months ago 31.12.04	1 Year ago 31.03.04	Pre-devaluation 01.07.97
Brunei Dollar	1.2742	1.2627	1.2834	1.2693	1.076
Indonesian Rupiah	7391.75	7269.03	7230.38	6497.91	1830
Philippine Peso	42.0394	41.848	43.865	42.5217	19.84
Malaysian Ringgit	2.945	2.9311	2.9609	2.8688	1.9
Euro	0.60120	0.5945	0.5719	0.6192	N/A
US Dollar	0.77480	0.7713	0.7801	0.7537	0.752

Prepared by the NT Department of Business, Industry and Resource Development.

This publication contains commodity market information prepared for DBIRD staff use in strategic research and extension planning. While DBIRD exercise care in the compilation and preparation of this information, no responsibility is taken for its accuracy or for the completeness of any information that is reproduced from other sources. DBIRD denies any loss or damage to any person whether caused directly or indirectly by the use of any of the information provided.