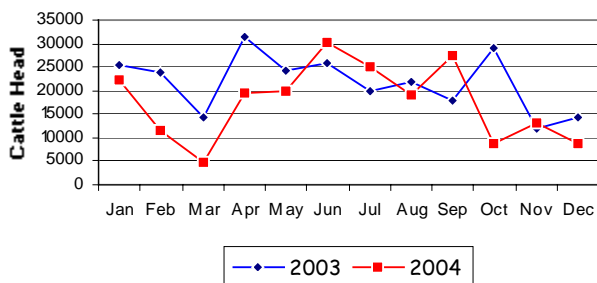


Pastoral Market Update 2004

December, 2004

LIVE CATTLE EXPORTS VIA DARWIN PORT												
# Please note that the "NT CATTLE" figures are NT cattle exported through the Port of Darwin only, some NT cattle are exported through interstate ports.												
Destination	TOTAL CATTLE (including interstate)						# NT CATTLE					
	2002	2003	2004	1-31 Dec	Previous Month	Difference	2002	2003	2004	1-31 Dec	Previous Month	Difference
BRUNEI	19,085	16,572	14,101	3,305	808	+2,497	12,012	13,574	10,492	3,069	808	+2,261
EGYPT	10,873	0	0	0	0	0	10,873	0	0	0	0	0
INDONESIA	199,327	182,624	158,600	5,626	12,404	-6,778	133,763	145,274	150,048	5,626	11,690	-6,064
PHILIPPINES	65,931	51,792	31,623	0	0	0	52,692	46,243	29,393	0	0	0
SABAH	318	224	304	0	0	0	17	224	304	0	0	0
SAUDI ARABIA	6,550	0	0	0	0	0	5,066	0	0	0	0	0
SARAWAK	1,033	320	0	0	0	0	846	92	0	0	0	0
VIETNAM	0	0	0	0	0	0	0	0	0	0	0	0
W-MALAYSIA	18,765	9,028	6,379	0	0	0	13,839	7,055	6,272	0	0	0
EAST TIMOR	32	58	35	0	0	0	0	58	0	0	0	0
JORDAN	688	0	0	0	0	0	688	0	0	0	0	0
TOTAL	322,602	260,618	211,042	8,931	13,212	-4,281	229,796	212,520	205,204	8,695	12,498	-3,803
			-49,576						-7,316			

**TOTAL Live Cattle Exports thru Port of Darwin
2003 v 2004**



"December at a glance"

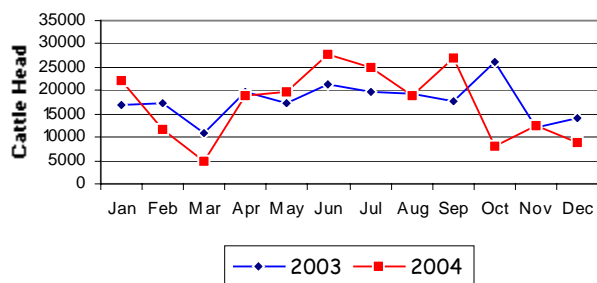
- 8,931 head of cattle through the Port of Darwin during December, 4,281 head less than November and 5,433 less than December last year.

"2004 at a glance"

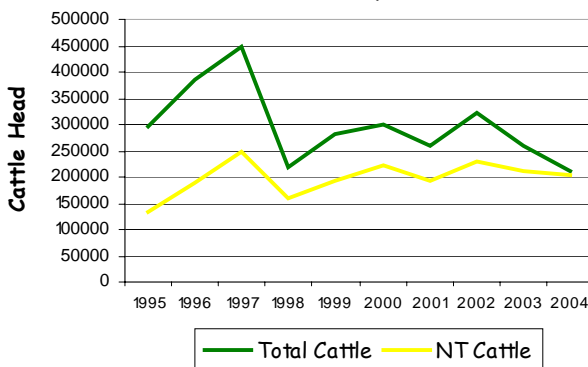
- 211,042 head of cattle through the Port of Darwin during 2004, 49,576 head less than 2003.
- 205,204 head of NT cattle through the Port of Darwin during 2004, 7,316 head less than 2003.

Percentage of NT cattle thru Port of Darwin, past 5 years				
2004	2003	2002	2001	2000
97.2%	81.5%	71.2%	74.8%	74.4%

**NT Live Cattle Exports thru Port of Darwin
2003 v 2004**



**Live Cattle Exports thru the Port of Darwin
(last 10 years)**



PREVIOUS 7 YEARS


Total Cattle, Port of Darwin							NT Cattle, Port of Darwin							
1996	1997	1998	1999	2000	2001	2002	1996	1997	1998	1999	2000	2001	2002	2003
383,535	448,196	219,439	280,011	299,179	258,127	322,602	189,918	246,389	160,412	192,441	222,669	193,172	229,796	212,520

OTHER LIVESTOCK EXPORTS VIA DARWIN PORT (includes NT and Interstate Stock)

Destination	Buffalo			Camels			Goats			Deer			Horses			Sheep			Pigs			
	2003	2004	1-31 Dec	2003	2004	1-31 Dec	2003	2004	1-31 Dec	2003	2004	1-31 Dec	2003	2004	1-31 Dec	2003	2004	1-31 Dec	2003	2004	1-31 Dec	
BRUNEI	2,774	2,279	624	94	115	33	3,295	3,680	1,399	0	30	0	0	0	0	352	0	0	0	0	0	0
EAST TIMOR	0	0	0	0	0	0	0	0	0	0	0	0	0	0	0	0	0	0	0	0	0	0
W-MALAYSIA	32	1,556	0	145	0	0	6,436	725	0	0	0	0	0	4	0	625	0	0	0	0	0	0
SAUDI ARABIA	0	0	0	0	0	0	0	0	0	0	0	0	0	0	0	0	0	0	0	0	0	0
E-MALAYSIA	0	0	0	100	0	0	239	217	0	60	0	0	0	0	0	0	0	0	0	0	0	0
PHILIPPINES	0	0	0	0	0	0	223	100	0	0	0	0	6	0	0	0	0	0	0	0	640	0
INDONESIA	0	0	0	0	0	0	34	0	0	0	0	0	1	3	0	0	0	0	0	0	0	0
THAILAND	0	0	0	0	0	0	0	0	0	0	0	0	0	0	0	0	0	0	0	0	0	0
TOTAL	2,806	3,835	624	339	115	33	10,227	4,722	1,399	60	30	0	7	7	0	977	0	0	0	0	640	0

NATIONAL CATTLE PRICES - W/E 17/12/04

(new figures not available until 14/01/05)

JAPAN OX									MEDIUM STEER										
Estimated dressed weight price (cents/kg)									Estimated dressed weight price (cents/kg)										
SALEYARDS				O.T.HOOKS					SALEYARDS				O.T.HOOKS						
NSW	QLD	SA	AV (Aust)	NSW	QLD	SA	AV (Aust)	NSW	QLD	SA	AV (Aust)	NSW	QLD	SA	AV (Aust)	NSW	QLD	SA	AV (Aust)
This week	342	361	306	330	332	346	298	318	This week	336	373	309	334	330	338	293	310		
Last week	338	347	298	328	327	348	298	318	Last week	341	353	310	340	343	340	293	313		
Year ago	304	326	263	296	314	318	283	294	Year ago	298	310	274	291	297	303	nq	nq		
US COW									TRADE STEER										
Estimated dressed weight price (cents/kg)									Estimated dressed weight price (cents/kg)										
SALEYARDS				O.T.HOOKS					SALEYARDS				O.T.HOOKS						
NSW	QLD	SA	AV (Aust)	NSW	QLD	SA	AV (Aust)	NSW	QLD	SA	AV (Aust)	NSW	QLD	SA	AV (Aust)	NSW	QLD	SA	AV (Aust)
This week	314	328	276	297	272	320	253	256	This week	379	383	335	371	330	338	291	321		
Last week	307	318	277	299	273	307	253	254	Last week	376	383	331	369	339	319	291	319		
Year ago	263	287	245	257	253	274	218	232	Year ago	330	325	285	322	316	293	255	286		
LIVE EXPORT QUOTES									Prices courtesy of Meat & Livestock Australia										
Estimated <u>live</u> weight price (cents/kg)									 www.mla.com.au										
LIGHT STEERS (280-400 kg)				HEAVY STEERS (400+ kg)					SALEYARDS				O.T.HOOKS						
Darwin	F/mantle	Darwin	F/mantle	Darwin	QLD	SA	AV (Aust)	NSW	QLD	SA	AV (Aust)	NSW	QLD	SA	AV (Aust)	NSW	QLD	SA	AV (Aust)
This week	nq		nq	nq			nq				nq								
Last week	nq		nq	nq			nq				nq								
Year ago	nq		nq	nq			nq				nq								

CURRENCY EXCHANGE RATES

Key Currencies 1AUD =	Current 31.12.04	Previous week 24.12.04	3 months ago 30.09.04	1 Year ago 31.12.03	Pre-devaluation 01.07.97
Brunei Dollar	1.2834	1.2599	1.2262	1.2758	1.076
Egyptian Pound	4.7837	4.7922	4.4968	4.6341	2.56
Euro	0.5719	0.5677	0.5816	0.5971	N/A
Indonesian Rupiah	7270.38	7116.07	6586.34	6344.12	1830
Libyan Dinar	1.0262	1.0081	0.8742	1.0218	0.27
Malaysian Ringgit	2.9609	2.9102	2.7243	2.842	1.9
Philippine Peso	43.865	43.0998	40.4496	41.776	19.84
Thai Baht	30.4676	29.9237	29.7985	29.7619	18.6744
US Dollar	0.7801	0.7669	0.7168	0.7495	0.752

Prepared by the NT Department of Business, Industry and Resource Development.

This publication contains commodity market information prepared for DBIRD staff use in strategic research and extension planning. While DBIRD exercise care in the compilation and preparation of this information, no responsibility is taken for its accuracy or for the completeness of any information that is reproduced from other sources. DBIRD denies any loss or damage to any person whether caused directly or indirectly by the use of any of the information provided.