

Pastoral Market Update 2004

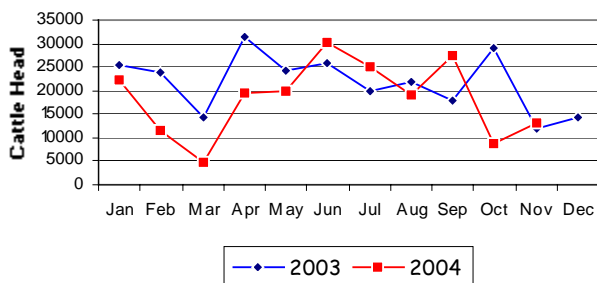
November, 2004

LIVE CATTLE EXPORTS VIA DARWIN PORT

Please note that the "NT CATTLE" figures are NT cattle exported through the Port of Darwin only, some NT cattle are exported through interstate ports.

Destination	TOTAL CATTLE (including interstate)							# NT CATTLE						
	2002	2003	Last year 30/11/03	YTD 30/11/04	1-30 Nov	Previous Month	Difference	2002	2003	Last year 30/11/03	YTD 30/11/04	1-30 Nov	Previous Month	Difference
BRUNEI	19,085	16,572	15,130	10,796	808	1,873	-1,065	12,012	13,574	12,132	10,492	808	1,585	-777
EGYPT	10,873	0	0	0	0	0	0	10,873	0	0	0	0	0	0
INDONESIA	199,327	182,624	172,204	152,974	12,404	6,410	+5,994	133,763	145,274	135,262	150,048	11,690	6,410	+5,280
PHILIPPINES	65,931	51,792	49,290	31,623	0	0	0	52,692	46,243	43,741	29,393	0	0	0
SABAH	318	224	224	304	0	0	0	17	224	224	304	0	0	0
SAUDI ARABIA	6,550	0	0	0	0	0	0	5,066	0	0	0	0	0	0
SARAWAK	1,033	320	320	0	0	0	0	846	92	92	0	0	0	0
VIETNAM	0	0	0	0	0	0	0	0	0	0	0	0	0	0
W-MALAYSIA	18,765	9,028	9,028	6,379	0	356	-356	13,839	7,055	7,055	6,272	0	249	-249
EAST TIMOR	32	58	58	35	0	0	0	0	58	58	0	0	0	0
JORDAN	688	0	0	0	0	0	0	688	0	0	0	0	0	0
TOTAL	322,602	260,618	246,254	202,111	13,212	8,639	+4,573	229,796	212,520	198,564	196,509	12,498	8,244	+4,254
				-44,143							-2,055			

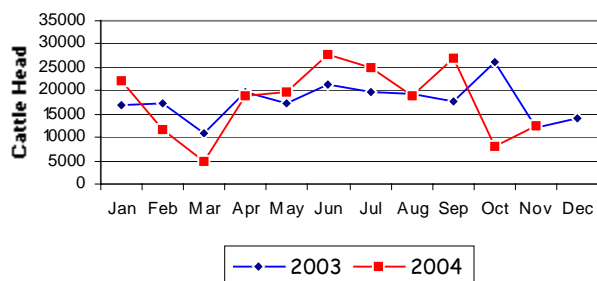
TOTAL Live Cattle Exports thru Port of Darwin
2003 v 2004



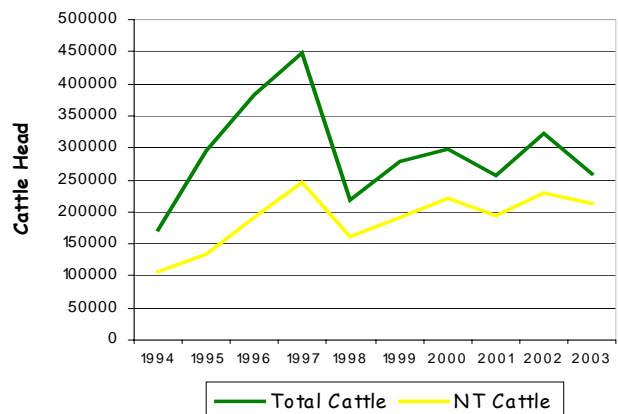
"November at a glance"

- **13,212** head of cattle through the Port of Darwin during November, 4,573 head more than October and 1,084 more than November last year.
- To date **97.2%** of 2004 live cattle exports through the Port of Darwin have been NT cattle, compared with 81.5% in 2003, 71.2% in 2002 & 74.8% in 2001.

NT Live Cattle Exports thru Port of Darwin
2003 v 2004



Live Cattle Exports thru the Port of Darwin
(last 10 years)



PREVIOUS 7 YEARS

Total Cattle, Port of Darwin							NT Cattle, Port of Darwin							
1996	1997	1998	1999	2000	2001	2002	1996	1997	1998	1999	2000	2001	2002	2003
383,535	448,196	219,439	280,011	299,179	258,127	322,602	189,918	246,389	160,412	192,441	222,669	193,172	229,796	212,520

OTHER LIVESTOCK EXPORTS VIA DARWIN PORT (includes NT and Interstate Stock)

Destination	Buffalo			Camels			Goats			Deer			Horses			Sheep			Pigs		
	2003	2004	1-30 Nov	2003	2004	1-30 Nov	2003	2004	1-30 Nov	2003	2004	1-30 Nov	2003	2004	1-30 Nov	2003	2004	1-30 Nov	2003	2004	1-30 Nov
BRUNEI	2,774	1,655	236	94	82	0	3,295	2,281	883	0	30	0	0	0	0	352	0	0	0	0	0
EAST TIMOR	0	0	0	0	0	0	0	0	0	0	0	0	0	0	0	0	0	0	0	0	0
W-MALAYSIA	32	1,556	0	145	0	0	6,436	725	0	0	0	0	0	4	0	625	0	0	0	0	0
SAUDI ARABIA	0	0	0	0	0	0	0	0	0	0	0	0	0	0	0	0	0	0	0	0	0
E-MALAYSIA	0	0	0	100	0	0	239	217	0	60	0	0	0	0	0	0	0	0	0	0	0
PHILIPPINES	0	0	0	0	0	0	223	100	0	0	0	0	6	0	0	0	0	0	0	640	0
INDONESIA	0	0	0	0	0	0	34	0	0	0	0	0	1	3	0	0	0	0	0	0	0
THAILAND	0	0	0	0	0	0	0	0	0	0	0	0	0	0	0	0	0	0	0	0	0
TOTAL	2,806	3,211	236	339	82	0	10,227	3,323	883	60	30	0	7	7	0	977	0	0	0	0	640

NATIONAL CATTLE PRICES - W/E 10/12/04

JAPAN OX									MEDIUM STEER										
Estimated dressed weight price (cents/kg)									Estimated dressed weight price (cents/kg)										
SALEYARDS				O.T.HOOKS					SALEYARDS				O.T.HOOKS						
NSW	QLD	SA	AV (Aust)	NSW	QLD	SA	AV (Aust)	NSW	QLD	SA	AV (Aust)	NSW	QLD	SA	AV (Aust)	NSW	QLD	SA	AV (Aust)
This week	338	347	298	328	327	348	298	318	This week	341	353	310	340	343	340	293	313		
Last week	342	351	300	333	330	355	308	326	Last week	341	363	301	336	347	351	303	318		
Year ago	310	329	271	305	314	321	288	296	Year ago	304	314	271	300	297	303	nq	nq		
US COW									TRADE STEER										
Estimated dressed weight price (cents/kg)									Estimated dressed weight price (cents/kg)										
SALEYARDS				O.T.HOOKS					SALEYARDS				O.T.HOOKS						
NSW	QLD	SA	AV (Aust)	NSW	QLD	SA	AV (Aust)	NSW	QLD	SA	AV (Aust)	NSW	QLD	SA	AV (Aust)	NSW	QLD	SA	AV (Aust)
This week	307	318	277	299	273	307	253	254	This week	376	383	331	369	339	319	291	319		
Last week	311	323	275	311	280	320	263	269	Last week	373	384	328	361	342	329	304	325		
Year ago	265	287	238	263	253	274	225	234	Year ago	327	325	300	323	316	293	255	286		
LIVE EXPORT QUOTES																			
Estimated <u>live</u> weight price (cents/kg)																			
LIGHT STEERS (280-400 kg)										HEAVY STEERS (400+ kg)									
Darwin					F/mantle					Darwin					F/mantle				
This week	nq		nq	nq		nq		nq		This week	nq		nq	nq		nq		nq	
Last week	nq		nq	nq		nq		nq		Last week	nq		nq	nq		nq		nq	
Year ago	170		140	160		140		160		Year ago	170		140	160		140		160	

Prices courtesy of:
Meat and Livestock Australia (MLA).

CURRENCY EXCHANGE RATES

Key Currencies 1AUD =	Current 16.12.04	Previous week 09.12.04	3 months ago 16.09.04	1 Year ago 16.12.03	Pre-devaluation 01.07.97
Brunei Dollar	1.2635	1.2535	1.1793	1.2764	1.076
Egyptian Pound	4.7899	4.7217	4.3589	4.5973	2.56
Euro	0.5701	0.5687	0.5721	0.6045	N/A
Indonesian Rupiah	7078.24	6952.48	6346.49	6299.22	1830
Libyan Dinar	1.0003	0.9967	0.8498	1.0145	0.27
Malaysian Ringgit	2.9058	2.8817	2.6427	2.8242	1.9
Philippine Peso	43.0647	42.507	39.0984	41.3471	19.84
Thai Baht	30.0612	29.9239	28.7415	29.5485	18.6744
US Dollar	0.7641	0.758	0.6953	0.7439	0.752

Prepared by the NT Department of Business, Industry and Resource Development.

This publication contains commodity market information prepared for DBIRD staff use in strategic research and extension planning. While DBIRD exercise care in the compilation and preparation of this information, no responsibility is taken for its accuracy or for the completeness of any information that is reproduced from other sources. DBIRD denies any loss or damage to any person whether caused directly or indirectly by the use of any of the information provided.