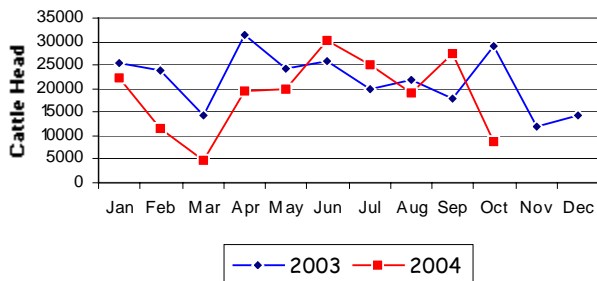


Pastoral Market Update 2004

October, 2004

LIVE CATTLE EXPORTS VIA DARWIN PORT														
# Please note that the "NT CATTLE" figures are NT cattle exported through the Port of Darwin only, some NT cattle are exported through interstate ports.														
Destination	TOTAL CATTLE (including interstate)							# NT CATTLE						
	2002	2003	Last year 31/10/03	YTD 31/10/04	1-31 Oct	Previous Month	Difference	2002	2003	Last year 31/10/03	YTD 31/10/04	1-31 Oct	Previous Month	Difference
BRUNEI	19,085	16,572	14,242	9,988	1,873	1,001	+872	12,012	13,574	11,244	9,684	1,585	1,001	+584
EGYPT	10,873	0	0	0	0	0	0	10,873	0	0	0	0	0	0
INDONESIA	199,327	182,624	164,600	140,570	6,410	22,474	-16,064	133,763	145,274	127,659	138,358	6,410	22,026	-15,616
PHILIPPINES	65,931	51,792	46,982	31,623	0	0	0	52,692	46,243	41,433	29,393	0	0	0
SABAH	318	224	224	304	0	0	0	17	224	224	304	0	0	0
SAUDI ARABIA	6,550	0	0	0	0	0	0	5,066	0	0	0	0	0	0
SARAWAK	1,033	320	320	0	0	0	0	846	92	92	0	0	0	0
VIETNAM	0	0	0	0	0	0	0	0	0	0	0	0	0	0
W-MALAYSIA	18,765	9,028	7,700	6,379	356	3,837	-3,481	13,839	7,055	5,727	6,272	249	3,837	-3,588
EAST TIMOR	32	58	58	35	0	0	0	0	58	58	0	0	0	0
JORDAN	688	0	0	0	0	0	0	688	0	0	0	0	0	0
TOTAL	322,602	260,618	234,126	188,899	8,639	27,312	-18,673	229,796	212,520	186,437	184,011	8,244	26,864	-18,620
				-45,227							-2,426			

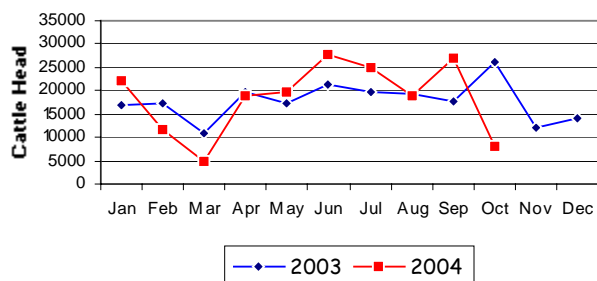
TOTAL Live Cattle Exports thru Port of Darwin
2003 v 2004



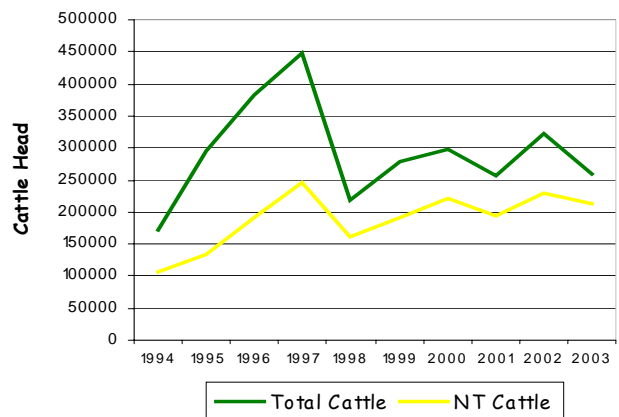
"October at a glance"

- **8,639** head of cattle through the Port of Darwin during October, 18,673 head less than September and 20,398 less than October last year.
- Another solid month for buffalo with 1,098 head though the Port of Darwin.

NT Live Cattle Exports thru Port of Darwin
2003 v 2004



Live Cattle Exports thru the Port of Darwin
(last 10 years)



PREVIOUS 7 YEARS

Total Cattle, Port of Darwin							NT Cattle, Port of Darwin							
1996	1997	1998	1999	2000	2001	2002	1996	1997	1998	1999	2000	2001	2002	2003
383,535	448,196	219,439	280,011	299,179	258,127	322,602	189,918	246,389	160,412	192,441	222,669	193,172	229,796	212,520

OTHER LIVESTOCK EXPORTS VIA DARWIN PORT (includes NT and Interstate Stock)

Destination	Buffalo			Camels			Goats			Deer			Horses			Sheep			Pigs			
	2003	2004	1-31 Oct	2003	2004	1-31 Oct	2003	2004	1-31 Oct	2003	2004	1-31 Oct	2003	2004	1-31 Oct	2003	2004	1-31 Oct	2003	2004	1-31 Oct	
BRUNEI	2,774	1,419	242	94	82	0	3,295	1,398	104	0	30	0	0	0	0	352	0	0	0	0	0	0
EAST TIMOR	0	0	0	0	0	0	0	0	0	0	0	0	0	0	0	0	0	0	0	0	0	0
W-MALAYSIA	32	1,556	856	145	0	0	6,436	725	470	0	0	0	0	4	0	625	0	0	0	0	0	0
SAUDI ARABIA	0	0	0	0	0	0	0	0	0	0	0	0	0	0	0	0	0	0	0	0	0	0
E-MALAYSIA	0	0	0	100	0	0	239	217	0	60	0	0	0	0	0	0	0	0	0	0	0	0
PHILIPPINES	0	0	0	0	0	0	223	100	0	0	0	0	6	0	0	0	0	0	0	0	640	0
INDONESIA	0	0	0	0	0	0	34	0	0	0	0	0	1	3	1	0	0	0	0	0	0	0
THAILAND	0	0	0	0	0	0	0	0	0	0	0	0	0	0	0	0	0	0	0	0	0	0
TOTAL	2,806	2,975	1,098	339	82	0	10,227	2,440	574	60	30	0	7	7	1	977	0	0	0	0	640	0

NATIONAL CATTLE PRICES - W/E 29/10/04

JAPAN OX									MEDIUM STEER										
Estimated dressed weight price (cents/kg)									Estimated dressed weight price (cents/kg)										
SALEYARDS				O.T.HOOKS					SALEYARDS				O.T.HOOKS						
NSW	QLD	SA	AV (Aust)	NSW	QLD	SA	AV (Aust)	NSW	QLD	SA	AV (Aust)	NSW	QLD	SA	AV (Aust)	NSW	QLD	SA	AV (Aust)
This week	345	360	304	345	325	355	321	332	This week	337	355	302	338	342	351	315	323		
Last week	354	356	327	347	345	351	329	338	Last week	349	350	324	344	343	349	324	327		
Year ago	332	338	296	332	309	321	313	309	Year ago	320	321	303	320	nq	308	nq	308		
US COW									TRADE STEER										
Estimated dressed weight price (cents/kg)									Estimated dressed weight price (cents/kg)										
SALEYARDS				O.T.HOOKS					SALEYARDS				O.T.HOOKS						
NSW	QLD	SA	AV (Aust)	NSW	QLD	SA	AV (Aust)	NSW	QLD	SA	AV (Aust)	NSW	QLD	SA	AV (Aust)	NSW	QLD	SA	AV (Aust)
This week	314	321	291	307	275	314	275	269	This week	371	370	341	361	335	336	341	336		
Last week	321	311	302	307	280	313	282	273	Last week	385	364	358	372	344	334	341	339		
Year ago	284	300	257	283	253	271	250	257	Year ago	345	337	319	340	317	287	300	309		
LIVE EXPORT QUOTES																			
Estimated <u>live</u> weight price (cents/kg)																			
LIGHT STEERS (280-400 kg)										HEAVY STEERS (400+ kg)									
Darwin					F/mantle					Darwin					F/mantle				
This week	185			nq	185			nq											
Last week	185			nq	185			nq											
Year ago	160			nq	145			nq											

Prices courtesy of:
Meat and Livestock Australia (MLA).

CURRENCY EXCHANGE RATES

Key Currencies 1AUD =	Current 31.10.04	Previous week 24.10.04	3 months ago 31.07.04	1 Year ago 31.10.03	Pre-devaluation 01.07.97
Brunei Dollar	1.2618	1.2412	1.2116	1.2424	1.076
Egyptian Pound	4.6893	4.668	4.3993	4.3629	2.56
Euro	0.5881	0.5849	0.5841	0.6055	N/A
Indonesian Rupiah	6825.76	6721.39	6422.46	6007.99	1830
Libyan Dinar	1.0007	0.9878	0.9446	0.9609	0.27
Malaysian Ringgit	2.8593	2.811	2.6677	2.6912	1.9
Philippine Peso	42.5745	41.9396	39.3794	39.008	19.84
Thai Baht	30.844	30.6768	29.0233	28.1339	18.6744
US Dollar	0.7522	0.7419	0.7022	0.7044	0.752

Prepared by the NT Department of Business, Industry and Resource Development.

This publication contains commodity market information prepared for DBIRD staff use in strategic research and extension planning. While DBIRD exercise care in the compilation and preparation of this information, no responsibility is taken for its accuracy or for the completeness of any information that is reproduced from other sources. DBIRD denies any loss or damage to any person whether caused directly or indirectly by the use of any of the information provided.