

Pastoral Market Update

December, 2003

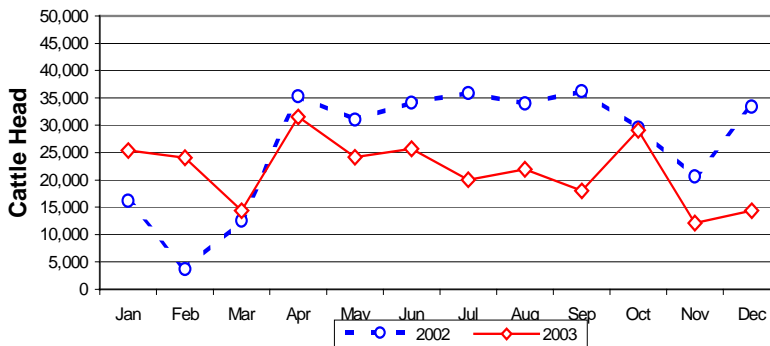
LIVE CATTLE EXPORTS VIA DARWIN PORT

| Destination | Total Cattle (including interstate) | | | | | | NT Cattle only | | | | | | | |
|--------------|--|----------------|--|----------------|---------------|----------------|----------------|----------------|----------------|------|----------------|----------------|---------------|---------------|
| | 2001 | 2002 | | 2003 | 1-31 Dec | Previous Month | 2001 | 2002 | | 2003 | 1-31 Dec | Previous Month | | |
| | | | | | | Difference | | | | | | Difference | | |
| BRUNEI | 16,155 | 19,085 | | 16,572 | 1,442 | 888 | +554 | 11,003 | 12,012 | | 13,574 | 1,442 | 888 | +554 |
| EGYPT | 52,692 | 10,873 | | 0 | 0 | 0 | 0 | 30,376 | 10,873 | | 0 | 0 | 0 | 0 |
| INDONESIA | 151,190 | 199,327 | | 182,624 | 10,420 | 7,604 | +2,816 | 121,632 | 133,763 | | 145,274 | 10,012 | 7,603 | +2,409 |
| PHILIPPINES | 31,984 | 65,931 | | 51,792 | 2,502 | 2,308 | +194 | 25,701 | 52,692 | | 46,243 | 2,502 | 2,308 | +194 |
| SABAH | 110 | 318 | | 224 | 0 | 0 | 0 | 110 | 17 | | 224 | 0 | 0 | 0 |
| SAUDI ARABIA | 0 | 6,550 | | 0 | 0 | 0 | 0 | 0 | 5,066 | | 0 | 0 | 0 | 0 |
| SARAWAK | 0 | 1,033 | | 320 | 0 | 0 | 0 | 0 | 846 | | 92 | 0 | 0 | 0 |
| VIETNAM | 941 | 0 | | 0 | 0 | 0 | 0 | 0 | 0 | | 0 | 0 | 0 | 0 |
| W-MALAYSIA | 5,055 | 18,765 | | 9,028 | 0 | 1,328 | -1,328 | 4,350 | 13,839 | | 7,055 | 0 | 1,328 | -1,328 |
| EAST TIMOR | 0 | 32 | | 58 | 0 | 0 | 0 | 0 | 0 | | 58 | 0 | 0 | 0 |
| JORDAN | 0 | 688 | | 0 | 0 | 0 | 0 | | 688 | | 0 | 0 | 0 | 0 |
| TOTAL | 258,127 | 322,602 | | 260,618 | 14,364 | 12,128 | +2,236 | 193,172 | 229,796 | | 212,520 | 13,956 | 12,127 | +1,829 |
| | | | | -61,984 | | | | | | | -17,276 | | | |

"December and 2003 at a glance"

- 14,364 head through the Port of Darwin during December. 2,236 head more than November, but a mammoth 19,013 less than December last year.
- Total live cattle exports through the Port of Darwin for 2003 were 260,618 head. 61,984 head less than 2002.
- Total NT live cattle exports through the Port of Darwin for 2003 were 212,520 head. 17,276 head less than 2002.

TOTAL Live Cattle Exports thru Port of Darwin
2002 v 2003



OTHER LIVESTOCK EXPORTS VIA DARWIN PORT (incl. NT and Interstate Stock)

| Destination | Buffalo | | | Camels | | | Goats | | | Deer | | | Horses | | | Sheep | | | Pigs | | | |
|--------------|--------------|--------------|------------|------------|------------|----------|--------------|---------------|------------|------------|-----------|----------|-----------|----------|----------|--------------|------------|----------|------------|----------|----------|----------|
| | 2002 | 2003 | 1-31 Dec | 2002 | 2003 | 1-31 Dec | 2002 | 2003 | 1-31 Dec | 2002 | 2003 | 1-31 Dec | 2002 | 2003 | 1-31 Dec | 2002 | 2003 | 1-31 Dec | 2002 | 2003 | 1-31 Dec | |
| BRUNEI | 3,359 | 2,774 | 470 | 144 | 94 | 0 | 2,439 | 3,295 | 400 | 37 | 0 | 0 | 0 | 0 | 0 | 430 | 352 | 0 | 0 | 0 | 0 | 0 |
| EAST TIMOR | 0 | 0 | 0 | 0 | 0 | 0 | 0 | 0 | 0 | 0 | 0 | 0 | 0 | 0 | 0 | 0 | 0 | 0 | 0 | 0 | 0 | 0 |
| W-MALAYSIA | 173 | 32 | 0 | 609 | 145 | 0 | 7,182 | 6,436 | 0 | 0 | 0 | 0 | 4 | 0 | 0 | 1,573 | 625 | 0 | 0 | 0 | 0 | 0 |
| SAUDI ARABIA | 0 | 0 | 0 | 118 | 0 | 0 | 0 | 0 | 0 | 0 | 0 | 0 | 0 | 0 | 0 | 0 | 0 | 0 | 0 | 0 | 0 | 0 |
| SARAWAK | 57 | 0 | 0 | 64 | 100 | 0 | 225 | 239 | 0 | 0 | 60 | 0 | 0 | 0 | 0 | 0 | 0 | 0 | 0 | 0 | 0 | 0 |
| PHILIPPINES | 0 | 0 | 0 | 0 | 0 | 0 | 0 | 223 | 0 | 0 | 0 | 0 | 29 | 6 | 0 | 0 | 0 | 0 | 0 | 686 | 0 | 0 |
| INDONESIA | 0 | 0 | 0 | 0 | 0 | 0 | 0 | 34 | 9 | 0 | 0 | 0 | 11 | 1 | 0 | 0 | 0 | 0 | 0 | 0 | 0 | 0 |
| THAILAND | 0 | 0 | 0 | 0 | 0 | 0 | 0 | 0 | 0 | 320 | 0 | 0 | 0 | 0 | 0 | 0 | 0 | 0 | 0 | 0 | 0 | 0 |
| TOTAL | 3,589 | 2,806 | 470 | 935 | 339 | 0 | 9,846 | 10,227 | 409 | 357 | 60 | 0 | 44 | 7 | 0 | 2,003 | 977 | 0 | 686 | 0 | 0 | 0 |

PREVIOUS 6 YEARS

| Total Cattle, Port of Darwin | | | | | | NT Cattle, Port of Darwin | | | | | | | |
|------------------------------|---------|---------|---------|---------|---------|---------------------------|---------|---------|---------|---------|---------|---------|---------|
| 1996 | 1997 | 1998 | 1999 | 2000 | 2001 | 1996 | 1997 | 1998 | 1999 | 2000 | 2001 | 2002 | |
| 383,535 | 448,196 | 219,439 | 280,011 | 299,179 | 258,127 | 322,602 | 189,918 | 246,389 | 160,412 | 192,441 | 222,669 | 193,172 | 229,796 |