

# Pastoral Market Update

November, 2003

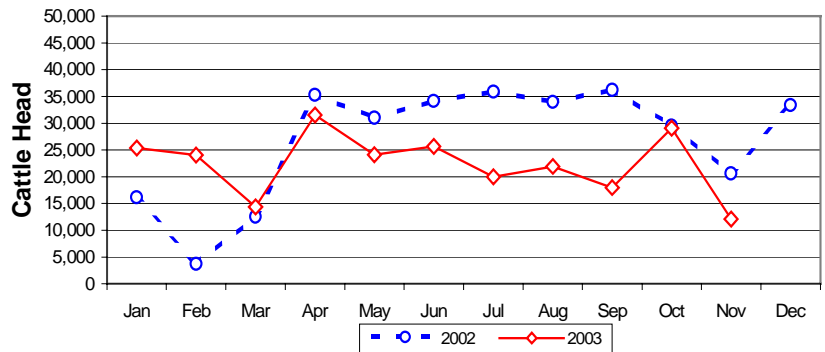
## LIVE CATTLE EXPORTS VIA DARWIN PORT

Destination	Total Cattle (including interstate)							NT Cattle only						
	2001	2002	Last year 30.11.02	YTD 30.11.03	1-30 Nov	Previous Month	Difference	2001	2002	Last year 30.11.02	YTD 30.11.03	1-30 Nov	Previous Month	Difference
BRUNEI	16,155	19,085	16,606	15,130	888	1,721	-833	11,003	12,012	9,723	12,132	888	1,721	-833
EGYPT	52,692	10,873	10,873	0	0	0	0	30,376	10,873	10,873	0	0	0	0
INDONESIA	151,190	199,327	176,666	172,204	7,604	17,451	-9,847	121,632	133,763	118,644	135,262	7,603	15,816	-8,213
PHILIPPINES	31,984	65,931	58,875	49,290	2,308	9,807	-7,499	25,701	52,692	45,636	43,741	2,308	8,622	-6,314
SABAH	110	318	198	224	0	0	0	110	17	0	224	0	0	0
SAUDI ARABIA	0	6,550	6,550	0	0	0	0	0	5,066	5,066	0	0	0	0
SARAWAK	0	1,033	1,033	320	0	0	0	0	846	846	92	0	0	0
VIETNAM	941	0	0	0	0	0	0	0	0	0	0	0	0	0
W-MALAYSIA	5,055	18,765	17,704	9,028	1,328	0	+1,328	4,350	13,839	13,839	7,055	1,328	0	+1,328
EAST TIMOR	0	32	32	58	0	58	-58	0	0	0	58	0	58	-58
JORDAN	0	688	688	0	0	0	0	0	688	688	0	0	0	0
<b>TOTAL</b>	<b>258,127</b>	<b>322,602</b>	<b>289,225</b>	<b>246,254</b>	<b>12,128</b>	<b>29,037</b>	<b>-16,909</b>	<b>193,172</b>	<b>229,796</b>	<b>205,315</b>	<b>198,564</b>	<b>12,127</b>	<b>26,217</b>	<b>-14,090</b>
				-42,971							-6,751			

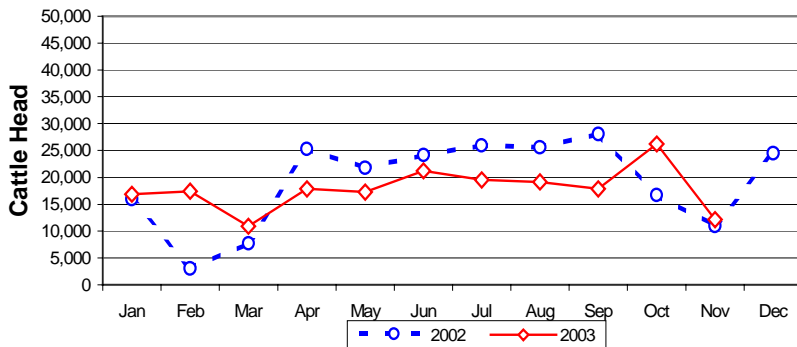
### "November at a glance"

- 12,128 head through the Port of Darwin during November. 16,909 head less than October and 8,492 less than November last year.
- Whilst poor numbers for November have caused the deficit against last years total cattle YTD to blow out to 42,971, NT cattle exports through the Port of Darwin in November actually exceeded November last year and only trail last years YTD by 6,751 head. (see graph below for comparison)

**TOTAL Live Cattle Exports thru Port of Darwin  
2002 v 2003**



**NT Live Cattle Exports thru Port of Darwin  
2002 v 2003**



### PREVIOUS 6 YEARS

#### Total Cattle, Port of Darwin

1996	1997	1998	1999	2000	2001	2002
383,535	448,196	219,439	280,011	299,179	258,127	322,602

#### NT Cattle, Port of Darwin

1996	1997	1998	1999	2000	2001	2002
189,918	246,389	160,412	192,441	222,669	193,172	229,796

**OTHER LIVESTOCK EXPORTS VIA DARWIN PORT (incl. NT and Interstate Stock)**

Destination	Buffalo			Camels			Goats			Deer			Horses			Sheep			Pigs		
	2002	YTD 2003	1-30 Nov	2002	YTD 2003	1-30 Nov	2002	YTD 2003	1-30 Nov	2002	YTD 2003	1-30 Nov	2002	YTD 2003	1-30 Nov	2002	YTD 2003	1-30 Nov	2002	YTD 2003	1-30 Nov
BRUNEL	3,359	2,304	100	144	94	0	2,439	2,895	0	37	0	0	0	0	0	430	352	0	0	0	0
EAST TIMOR	0	0	0	0	0	0	0	0	0	0	0	0	0	0	0	0	0	0	0	0	0
W-MALAYSIA	173	32	0	609	145	0	7,182	6,436	0	0	0	0	4	0	0	1,573	625	0	0	0	0
SAUDI ARABIA	0	0	0	118	0	0	0	0	0	0	0	0	0	0	0	0	0	0	0	0	0
SARAWAK	57	0	0	64	100	0	225	239	0	0	60	0	0	0	0	0	0	0	0	0	0
PHILIPPINES	0	0	0	0	0	0	0	223	0	0	0	0	29	6	0	0	0	0	686	0	0
INDONESIA	0	0	0	0	0	0	0	25	0	0	0	0	11	1	0	0	0	0	0	0	0
THAILAND	0	0	0	0	0	0	0	0	0	320	0	0	0	0	0	0	0	0	0	0	0
<b>TOTAL</b>	<b>3,589</b>	<b>2,336</b>	<b>100</b>	<b>935</b>	<b>339</b>	<b>0</b>	<b>9,846</b>	<b>9,818</b>	<b>0</b>	<b>357</b>	<b>60</b>	<b>0</b>	<b>44</b>	<b>7</b>	<b>0</b>	<b>2,003</b>	<b>977</b>	<b>0</b>	<b>686</b>	<b>0</b>	<b>0</b>

**EXCHANGE RATES**

Key Currencies 1 Australian Dollar =	Current 28.11.03	Previous week 21.11.03	3 months ago 31.08.03	1 Year ago 30.11.02	Pre-devaluation 01.07.1997
Brunei Dollar	1.2759	1.257	1.1431	0.9913	1.076
Egyptian Pound	4.4772	4.472	4.0123	2.6151	2.56
Euro	0.6071	0.6071	0.5898	0.5631	N/A
Indonesian Rupiah	6156.24	6186.34	5504.22	5040.2	1830
Libyan Dinar	0.9863	0.9862	0.7925	0.701	0.27
Malaysian Ringgit	2.7456	2.7447	2.4637	2.1341	1.9
Philippine Peso	40.3356	40.0778	35.6429	30.287	19.84
Thai Baht	28.884	28.8972	26.6529	24.4438	18.6744
US Dollar	0.7229	0.7231	0.6477	0.5609	0.752

**NATIONAL CATTLE PRICES - W/E 28/11/03**

JAPANESE STEER									KOREAN STEER								
Estimated dressed weight price (cents/kg)									Estimated dressed weight price (cents/kg)								
SALEYARDS				O.T.HOOKS					SALEYARDS				O.T.HOOKS				
NSW	QLD	SA	AV (Aust)	NSW	QLD	SA	AV (Aust)	NSW	QLD	SA	AV (Aust)	NSW	QLD	SA	AV (Aust)		
This week	303	316	277	298	313	319	293	301	This week	298	311	284	299	299	300	nq	300
Last week	308	319	275	309	313	319	303	306	Last week	302	309	280	302	299	300	nq	300
Year ago	270	276	231	267	251	271	nq	264	Year ago	238	255	227	248	236	258	nq	240
US MANUFACTURING COW									DOMESTIC TRADE STEER								
Estimated dressed weight price (cents/kg)									Estimated dressed weight price (cents/kg)								
SALEYARDS				O.T.HOOKS					SALEYARDS				O.T.HOOKS				
NSW	QLD	SA	AV (Aust)	NSW	QLD	SA	AV (Aust)	NSW	QLD	SA	AV (Aust)	NSW	QLD	SA	AV (Aust)		
This week	254	271	247	258	254	271	218	232	This week	325	316	306	292	317	293	300	275
Last week	256	276	245	255	254	271	233	236	Last week	320	318	296	300	316	293	300	300
Year ago	186	226	163	195	175	217	170	181	Year ago	255	253	236	265	238	250	260	250
LIVE EXPORT QUOTES									<p align="center"><b>Prices courtesy of:</b> <b><u>Meat and Livestock Australia (MLA).</u></b></p>								
Estimated <u>live</u> weight price (cents/kg)																	
LIGHT STEERS (280-400 kg)				HEAVY STEERS (400+ kg)													
Darwin	T/ville	F/mantle	Darwin	T/ville	F/mantle	Darwin	T/ville	F/mantle									
This week	170	nq	145	160	nq	142											
Last week	170	nq	145	160	nq	145											
Year ago	165	nq	nq	165	nq	nq											

Prepared by the NT Department of Business, Industry and Resource Development.

This publication contains commodity market information prepared for DBIRD staff use in strategic research and extension planning. While DBIRD exercise care in the compilation and preparation of this information, no responsibility is taken for its accuracy or for the completeness of any information that is reproduced from other sources. DBIRD denies any loss or damage to any person whether caused directly or indirectly by the use of any of the information provided.