

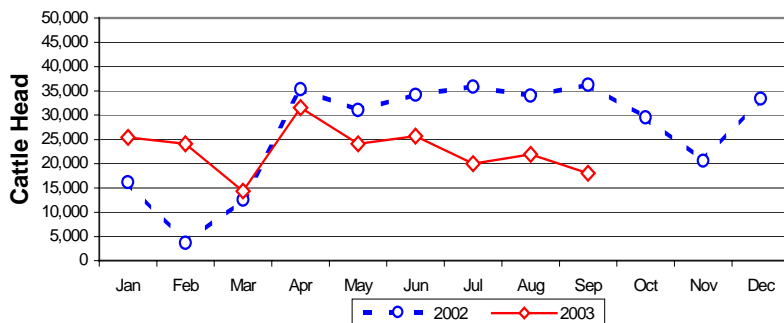
# Pastoral Market Update

September, 2003

## LIVE CATTLE EXPORTS VIA DARWIN PORT

Destination	Total Cattle (including interstate)							NT Cattle only						
	2001	2002	Last year 30.09.02	YTD 30.09.03	1-30 Sep	Previous Month	Difference	2001	2002	Last year 30.09.02	YTD 30.09.03	1-30 Sep	Previous Month	Difference
BRUNEI	16,155	19,085	13,382	12,521	1,395	0	+1,395	11,003	12,012	8,402	9,523	1,299	0	+1,299
EGYPT	52,692	10,873	10,873	0	0	0	0	30,376	10,873	10,873	0	0	0	0
INDONESIA	151,190	199,327	136,995	147,149	7,615	15,886	-8,271	121,632	133,763	96,854	111,843	7,615	13,782	-6,167
PHILIPPINES	31,984	65,931	51,982	37,175	8,973	6,067	+2,906	25,701	52,692	41,259	32,811	8,973	5,388	+3,585
SABAH	110	318	198	224	0	0	0	110	17	0	224	0	0	0
SAUDI ARABIA	0	6,550	6,550	0	0	0	0	0	5,066	5,066	0	0	0	0
SARAWAK	0	1,033	1,033	320	0	0	0	0	846	846	92	0	0	0
VIETNAM	941	0	0	0	0	0	0	0	0	0	0	0	0	0
W-MALAYSIA	5,055	18,765	17,328	7,700	0	0	0	4,350	13,839	13,679	5,727	0	0	0
EAST TIMOR	0	32	32	0	0	0	0	0	0	0	0	0	0	0
JORDAN	0	688	688	0	0	0	0	0	688	688	0	0	0	0
<b>TOTAL</b>	<b>258,127</b>	<b>322,602</b>	<b>239,061</b>	<b>205,089</b>	<b>17,983</b>	<b>21,953</b>	<b>-3,970</b>	<b>193,172</b>	<b>229,796</b>	<b>177,667</b>	<b>160,220</b>	<b>17,887</b>	<b>19,170</b>	<b>-1,283</b>
				-33,927							-17,447			

Live Cattle Exports thru Port of Darwin  
2002 v 2003



### "September at a glance"

- 17,983 head through the Port of Darwin during September. 3,970 head less than August and 18,254 less than September last year.
- Total live cattle exports through the Port of Darwin are now 33,927 head behind the same time last year.

## 'OTHER' LIVESTOCK EXPORTS VIA DARWIN PORT (incl. NT and Interstate Stock)

Destination	Buffalo			Camels			Goats			Deer			Horses			Sheep			Pigs		
	2002	YTD 2003	1-30 Sep	2002	YTD 2003	1-30 Sep	2002	YTD 2003	1-30 Sep	2002	YTD 2003	1-30 Sep	2002	YTD 2003	1-30 Sep	2002	YTD 2003	1-30 Sep	2002	YTD 2003	1-30 Sep
BRUNEI	3,359	1,964	202	144	94	32	2,439	2,895	790	37	0	0	0	0	0	430	352	0	0	0	0
EAST TIMOR	0	0	0	0	0	0	0	0	0	0	0	0	0	0	0	0	0	0	0	0	0
W-MALAYSIA	173	32	0	609	145	0	7,182	6,436	0	0	0	0	4	0	0	1,573	625	0	0	0	0
SAUDI ARABIA	0	0	0	118	0	0	0	0	0	0	0	0	0	0	0	0	0	0	0	0	0
SARAWAK	57	0	0	64	100	0	225	239	0	0	60	0	0	0	0	0	0	0	0	0	0
PHILIPPINES	0	0	0	0	0	0	0	223	0	0	0	0	29	6	0	0	0	0	0	686	0
INDONESIA	0	0	0	0	0	0	0	25	9	0	0	0	11	1	0	0	0	0	0	0	0
THAILAND	0	0	0	0	0	0	0	0	0	320	0	0	0	0	0	0	0	0	0	0	0
<b>TOTAL</b>	<b>3,589</b>	<b>1,996</b>	<b>202</b>	<b>935</b>	<b>339</b>	<b>32</b>	<b>9,846</b>	<b>9,818</b>	<b>790</b>	<b>357</b>	<b>60</b>	<b>0</b>	<b>44</b>	<b>7</b>	<b>0</b>	<b>2,003</b>	<b>977</b>	<b>0</b>	<b>686</b>	<b>0</b>	<b>0</b>

### PREVIOUS 6 YEARS

#### Total Cattle, Port of Darwin

1996 1997 1998 1999 2000 2001 2002  
383,535 448,196 219,439 280,011 299,179 258,127 322,602

#### NT Cattle, Port of Darwin

1996 1997 1998 1999 2000 2001 2002  
189,918 246,389 160,412 192,441 222,669 193,172 229,796

## NATIONAL CATTLE PRICES - W/E 26/09/03

<b>JAPANESE STEER</b>									<b>KOREAN STEER</b>								
Estimated dressed weight price (cents/kg)									Estimated dressed weight price (cents/kg)								
SALEYARDS					O.T.HOOKS				SALEYARDS					O.T.HOOKS			
NSW	QLD	SA	AV (Aust)		NSW	QLD	SA	AV (Aust)	NSW	QLD	SA	AV (Aust)		NSW	QLD	SA	AV (Aust)
This week	317	320	323	317	305	305	323	310	This week	315	305	324	309	289	298	nq	294
Last week	321	310	329	316	307	308	323	314	Last week	316	299	335	305	298	302	nq	298
Year ago	306	306	280	302	277	295	268	279	Year ago	284	286	270	284	261	288	nq	266
<b>US MANUFACTURING COW</b>									<b>DOMESTIC TRADE STEER</b>								
Estimated dressed weight price (cents/kg)									Estimated dressed weight price (cents/kg)								
SALEYARDS					O.T.HOOKS				SALEYARDS					O.T.HOOKS			
NSW	QLD	SA	AV (Aust)		NSW	QLD	SA	AV (Aust)	NSW	QLD	SA	AV (Aust)		NSW	QLD	SA	AV (Aust)
This week	263	270	274	265	241	255	255	231	This week	347	315	349	335	311	279	300	318
Last week	271	268	289	269	242	259	255	229	Last week	346	315	349	336	304	285	290	323
Year ago	251	276	216	249	217	257	205	223	Year ago	292	288	277	286	258	274	290	293
<b>LIVE EXPORT QUOTES</b>									<b>Prices courtesy of:</b> <b><u>Meat and Livestock Australia (MLA).</u></b>								
Estimated <u>live</u> weight price (cents/kg)																	
LIGHT STEERS (280-400 kg)					HEAVY STEERS (400+ kg)												
Darwin	T/ville	F/mantle	Darwin	T/ville	F/mantle												
This week	160	nq	nq	140	nq	nq											
Last week	160	nq	nq	140	nq	nq											
Year ago	nq	nq	nq	nq	nq	nq											

### Live Cattle Exports Forecast to Fall in Coming Years (LiveLink September 2003)

Over the fiscal year 2002/03, the number of live cattle exported rose by 190,000 (or 23%) to a record 1.01 million head of cattle. This reflected a resurgence of demand from South East Asian markets, particularly Indonesia, good supply of suitable stock in the Kimberley, NT and north Queensland and the increased cost of finishing cattle for the slaughter market during the drought. The trade provided an attractive alternative outlet for young cattle over the drought period.

The major fall in cattle numbers nationally, high slaughter prices and some easing in Indonesian demand, however, suggest that live exports in the second half of 2003 are likely to fall well short of last year's record. Hence, live exports for 2003 are predicted to drop 12% to 880,000 (compared with the January forecast of 3%). This implies exports of 480,000 cattle in the second half of the year, compared with 400,000 in the first half and 607,590 cattle in the second half of 2002.

Modest growth in exports to Indonesia, Malaysia, Japan and the Middle East for the year is likely to be more than offset by a sharp fall to Egypt and modest decline to the Philippines.

Tight post-drought supplies, high prices and the desire of producers to hold additional young cattle to rebuild, are likely to lead to a further decline in live cattle exports in 2004, before a steady recovery, to again exceed one million head by 2007.

**Prepared by the NT Department of Business, Industry and Resource Development.**

This publication contains commodity market information prepared for DBIRD staff use in strategic research and extension planning. While DBIRD exercise care in the compilation and preparation of this information, no responsibility is taken for its accuracy or for the completeness of any information that is reproduced from other sources. DBIRD denies any loss or damage to any person whether caused directly or indirectly by the use of any of the information provided.