

Pastoral Market Update

June, 2003

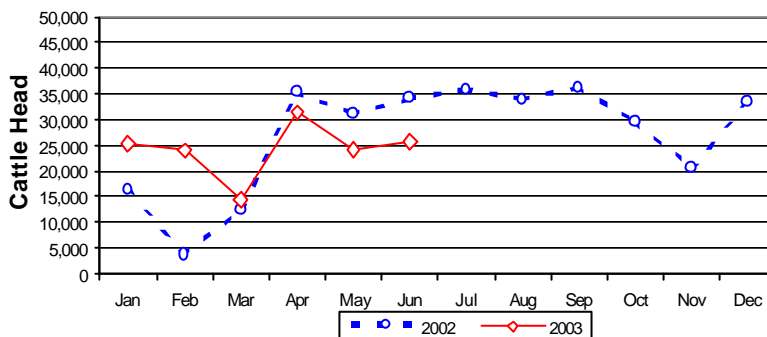
LIVE CATTLE EXPORTS VIA DARWIN PORT

Destination	Total Cattle (including interstate)							NT Cattle only						
	2001	2002	Last year 30.06.02	YTD 30.06.03	1-30 June	Previous Month	Difference	2001	2002	Last year 30.06.02	YTD 30.06.03	1-30 June	Previous Month	Difference
BRUNEI	16,155	19,085	8,601	10,343	1,175	1,631	-456	11,003	12,012	4,778	7,513	1,031	691	+340
EGYPT	52,692	10,873	0	0	0	0	0	30,376	10,873	0	0	0	0	0
INDONESIA	151,190	199,327	76,038	109,609	18,662	22,163	-3,501	121,632	133,763	53,918	76,664	14,376	16,253	-1,877
PHILIPPINES	31,984	65,931	34,474	17,329	5,609	0	+5,609	25,701	52,692	28,316	13,812	5,609	0	+5,609
SABAH	110	318	78	224	224	0	+224	110	17	0	224	224	0	+224
SAUDI ARABIA	0	6,550	3,961	0	0	0	0	0	5,066	2,809	0	0	0	0
SARAWAK	0	1,033	0	320	0	0	0	0	846	0	92	0	0	0
VIETNAM	941	0	0	0	0	0	0	0	0	0	0	0	0	0
W-MALAYSIA	5,055	18,765	9,751	7,301	0	341	-341	4,350	13,839	8,178	5,328	0	341	-341
EAST TIMOR	0	32	32	0	0	0	0	0	0	0	0	0	0	0
JORDAN	0	688	0	0	0	0	0	0	688	0	0	0	0	0
TOTAL	258,127	322,602	132,935	145,126	25,670	24,135	+1,535	193,172	229,796	97,999	103,633	21,240	17,285	+3,955
				+12,191							+5,634			

Live Cattle Exports thru Port of Darwin
2002 v 2003

"June at a glance"

- 25,670 head through the Port of Darwin during June. 1,535 head more than May, but as the graph displays 8,489 less than June last year. Unfortunately the early gains of January and February are eroding rapidly.



'OTHER' LIVESTOCK EXPORTS VIA DARWIN PORT (incl. NT and Interstate Stock)

Destination	Buffalo			Camels			Goats			Deer			Horses			Sheep			Pigs		
	2002	YTD 2003	1-30 June	2002	YTD 2003	1-30 June	2002	YTD 2003	1-30 June	2002	YTD 2003	1-30 June	2002	YTD 2003	1-30 June	2002	YTD 2003	1-30 June	2002	YTD 2003	1-30 June
BRUNEI	3,359	1,602	241	144	46	0	2,439	2,105	495	37	0	0	0	0	0	430	352	352	0	0	0
EAST TIMOR	0	0	0	0	0	0	0	0	0	0	0	0	0	0	0	0	0	0	0	0	0
W-MALAYSIA	173	32	0	609	145	0	7,182	4,286	0	0	0	0	4	0	0	1,573	5	0	0	0	0
SAUDI ARABIA	0	0	0	118	0	0	0	0	0	0	0	0	0	0	0	0	0	0	0	0	0
SARAWAK	57	0	0	64	100	0	225	239	0	0	60	0	0	0	0	0	0	0	0	0	0
PHILIPPINES	0	0	0	0	0	0	0	0	0	0	0	0	29	6	0	0	0	0	686	0	0
INDONESIA	0	0	0	0	0	0	0	0	0	0	0	0	11	0	0	0	0	0	0	0	0
THAILAND	0	0	0	0	0	0	0	0	0	320	0	0	0	0	0	0	0	0	0	0	0
TOTAL	3,589	1,634	241	935	291	0	9,846	6,630	495	357	60	0	44	6	0	2,003	357	352	686	0	0

PREVIOUS 6 YEARS

Total Cattle, Port of Darwin

1996	1997	1998	1999	2000	2001	2002
383,535	448,196	219,439	280,011	299,179	258,127	322,602

NT Cattle, Port of Darwin

1996	1997	1998	1999	2000	2001	2002
189,918	246,389	160,412	192,441	222,669	193,172	229,796

NATIONAL CATTLE PRICES - W/E 27/06/03

JAPANESE STEER									KOREAN STEER										
		Estimated dressed weight price (cents/kg)										Estimated dressed weight price (cents/kg)							
		SALEYARDS				O.T.HOOKS						SALEYARDS				O.T.HOOKS			
		NSW	QLD	SA	AV (Aust)	NSW	QLD	SA	AV (Aust)			NSW	QLD	SA	AV (Aust)	NSW	QLD	SA	AV (Aust)
This week		292	289	nq	295	284	275	298	288	This week		286	286	305	290	276	261	nq	269
Last week		293	275	310	287	286	278	298	289	Last week		288	279	nq	286	277	265	nq	271
Year ago		267	253	270	264	255	239	255	248	Year ago		257	243	281	253	240	231	nq	236
US MANUFACTURING COW									DOMESTIC TRADE STEER										
		Estimated dressed weight price (cents/kg)										Estimated dressed weight price (cents/kg)							
		SALEYARDS				O.T.HOOKS						SALEYARDS				O.T.HOOKS			
		NSW	QLD	SA	AV (Aust)	NSW	QLD	SA	AV (Aust)			NSW	QLD	SA	AV (Aust)	NSW	QLD	SA	AV (Aust)
This week		212	221	229	214	207	218	200	199	This week		323	294	313	315	286	249	285	304
Last week		207	219	226	217	210	218	205	201	Last week		320	294	321	315	283	255	285	305
Year ago		210	212	225	217	201	194	205	203	Year ago		308	280	333	299	255	237	300	290
LIVE EXPORT QUOTES																			
		Estimated <u>live</u> weight price (cents/kg)																	
		LIGHT STEERS (280-400 kg)			HEAVY STEERS (400+ kg)														
		Darwin	T/ville	F/mantle	Darwin	T/ville	F/mantle												
This week		145	nq	nq	145	nq	nq												
Last week		140	130	nq	140	130	nq												
Year ago		nq	nq	nq	125	nq	nq												

**Prices courtesy of:
Meat and Livestock Australia (MLA).**

Northern Port Activity Surges (LiveLink June 2003)

Live cattle are increasingly being exported out of ports in northern Australia. "North Australia" is defined as any port above the 26th parallel, this includes all ports above Geraldton on the west coast of Australia and Brisbane on the east coast.

For the January to April period this year northern ports accounted for 61% of total cattle exports, an increase on the 56.8% recorded for the same period last year. This increase has largely been driven by the port of Darwin with a massive 94,484 head exported from January to April, representing 36.2% of total cattle exports, up from 34.5% in 2002.

Townsville exported 40,599 head in the same period, up 9,236 head from 2002. However, as a percentage of total trade, it has remained unchanged at 15.6%.

Karumba has increased from 3% to 4.4% at 11,432 and Wyndham is not far behind at 10,103 head, an increase from 0.6% to almost 4%.

The increased activity in northern ports has flowed from substantially increased trade with Indonesia (up 95%) and Malaysia (up 25%). Closer proximity of the ports of Darwin, Wyndham, Karumba, Broome, 4-7 days sailing time, and Townsville, 7-9 days, has resulted in increased throughput.

Fremantle, the largest southern port and second largest port for live cattle exports, has maintained similar export volumes this year but has dropped back substantially as a percentage of total trade. In the January to April period this year, Fremantle exported 54,068 head compared with 53,032 head last year. However, the total percentage of cattle trade dropped from 26.6% in 2002 to 20.7% in 2003. Fremantle has the shortest shipping time to the Middle East region (from 15 to 21 days) and so, has been most affected by the decline in exports to this region.

Prepared by the NT Department of Business, Industry and Resource Development.

This publication contains commodity market information prepared for DBIRD staff use in strategic research and extension planning. While DBIRD exercise care in the compilation and preparation of this information, no responsibility is taken for its accuracy or for the completeness of any information that is reproduced from other sources. DBIRD denies any loss or damage to any person whether caused directly or indirectly by the use of any of the information provided.