

# Pastoral Market Update

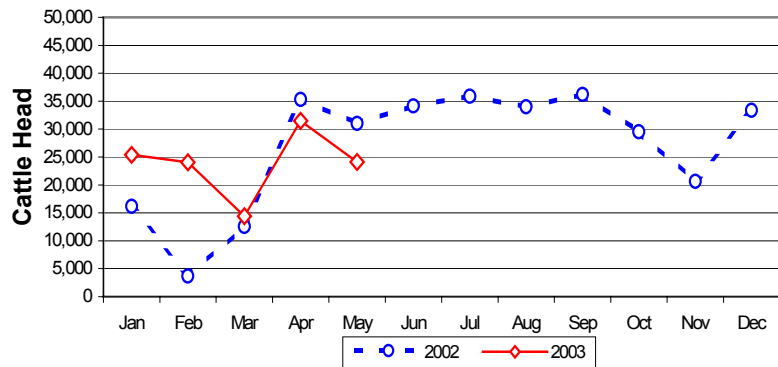
May, 2003

LIVE CATTLE EXPORTS VIA DARWIN PORT														
Destination	Total Cattle (including interstate)							NT Cattle only						
	2001	2002	Last year 31.05.02	YTD 31.05.03	1-31 May	Previous Month	Difference	2001	2002	Last year 31.05.02	YTD 31.05.03	1-31 May	Previous Month	Difference
BRUNEI	16,155	19,085	7,244	9,168	1,631	1,794	-163	11,003	12,012	3,665	6,482	691	663	+28
EGYPT	52,692	10,873	0	0	0	0	0	30,376	10,873	0	0	0	0	0
INDONESIA	151,190	199,327	59,220	90,947	22,163	23,440	-1,277	121,632	133,763	41,612	62,288	16,253	12,922	+3,331
PHILIPPINES	31,984	65,931	27,452	11,720	0	3,433	-3,433	25,701	52,692	24,469	8,203	0	3,433	-3,433
SABAH	110	318	0	0	0	0	0	110	17	0	0	0	0	0
SAUDI ARABIA	0	6,550	0	0	0	0	0	0	5,066	0	0	0	0	0
SARAWAK	0	1,033	0	320	0	0	0	0	846	0	92	0	0	0
VIETNAM	941	0	0	0	0	0	0	0	0	0	0	0	0	0
W-MALAYSIA	5,055	18,765	4,828	7,301	341	2,830	-2,489	4,350	13,839	4,088	5,328	341	2,830	-2,489
EAST TIMOR	0	32	32	0	0	0	0	0	0	0	0	0	0	0
JORDAN	0	688	0	0	0	0	0	0	688	0	0	0	0	0
<b>TOTAL</b>	<b>258,127</b>	<b>322,602</b>	<b>98,776</b>	<b>119,456</b>	<b>24,135</b>	<b>31,497</b>	<b>-7,362</b>	<b>193,172</b>	<b>229,796</b>	<b>73,834</b>	<b>82,393</b>	<b>17,285</b>	<b>19,848</b>	<b>-2,563</b>
				+20,680							+8,559			

## "May at a glance"

- 24,135 head through the Port of Darwin during May. 7,362 head less than April, and 6,912 less than May last year.
- Nasty turn of the worm!

Live Cattle Exports thru Port of Darwin  
2002 v 2003



## 'OTHER' LIVESTOCK EXPORTS VIA DARWIN PORT (incl. NT and Interstate Stock)

Destination	Buffalo			Camels			Goats			Deer			Horses			Sheep			Pigs			
	2002	YTD 2003	1-31 May	2002	YTD 2003	1-31 May	2002	YTD 2003	1-31 May	2002	YTD 2003	1-31 May	2002	YTD 2003	1-31 May	2002	YTD 2003	1-31 May	2002	YTD 2003	1-31 May	
BRUNEI	3,359	1,361	310	144	46	15	2,439	1,610	463	37	0	0	0	0	0	430	0	0	0	0	0	0
EAST TIMOR	0	0	0	0	0	0	0	0	0	0	0	0	0	0	0	0	0	0	0	0	0	0
W-MALAYSIA	173	32	0	609	145	0	7,182	4,286	3,303	0	0	0	4	0	0	1,573	5	5	0	0	0	0
SAUDI ARABIA	0	0	0	118	0	0	0	0	0	0	0	0	0	0	0	0	0	0	0	0	0	0
SARAWAK	57	0	0	64	100	0	225	239	0	0	60	0	0	0	0	0	0	0	0	0	0	0
PHILIPPINES	0	0	0	0	0	0	0	0	0	0	0	0	29	6	0	0	0	0	686	0	0	0
INDONESIA	0	0	0	0	0	0	0	0	0	0	0	0	11	0	0	0	0	0	0	0	0	0
THAILAND	0	0	0	0	0	0	0	0	0	320	0	0	0	0	0	0	0	0	0	0	0	0
<b>TOTAL</b>	<b>3,589</b>	<b>1,393</b>	<b>310</b>	<b>935</b>	<b>291</b>	<b>15</b>	<b>9,846</b>	<b>6,135</b>	<b>3,766</b>	<b>357</b>	<b>60</b>	<b>0</b>	<b>44</b>	<b>6</b>	<b>0</b>	<b>2,003</b>	<b>5</b>	<b>5</b>	<b>686</b>	<b>0</b>	<b>0</b>	<b>0</b>

## PREVIOUS 6 YEARS

Total Cattle, Port of Darwin						NT Cattle, Port of Darwin						
1996	1997	1998	1999	2000	2001	1996	1997	1998	1999	2000	2001	2002
383,535	448,196	219,439	280,011	299,179	258,127	189,918	246,389	160,412	192,441	222,669	193,172	229,796

## EXCHANGE RATES

Key Currencies 1 Australian Dollar =	Current 30.05.03	Previous week 23.05.03	3 months ago 28.02.03	1 Year ago 30.05.02	Pre-devaluation 01.07.1997
Brunei Dollar	1.1514	1.162	1.0502	1.01	1.076
Egyptian Pound	3.8685	3.9642	3.3323	2.6239	2.56
Euro	0.5483	0.5631	0.5628	0.6023	N/A
Indonesian Rupiah	5425.42	5556.3	5391.35	4995.35	1830
Libyan Dinar	0.7989	0.8057	0.7384	0.755	0.27
Malaysian Ringgit	2.4652	2.5039	2.3017	2.142	1.9
Philippine Peso	34.7485	34.8628	32.9687	28.253	19.84
Thai Baht	27.2903	27.6932	25.8337	23.9579	18.6744
US Dollar	0.6528	0.6587	0.6054	0.5634	0.752

## NATIONAL CATTLE PRICES - W/E 30/05/03

JAPANESE STEER									KOREAN STEER								
Estimated dressed weight price (cents/kg)									Estimated dressed weight price (cents/kg)								
SALEYARDS				O.T.HOOKS					SALEYARDS				O.T.HOOKS				
NSW	QLD	SA	AV (Aust)	NSW	QLD	SA	AV (Aust)	NSW	QLD	SA	AV (Aust)	NSW	QLD	SA	AV (Aust)		
This week	310	295	304	306	286	278	285	285	This week	303	278	315	291	282	263	nq	273
Last week	303	293	nq	303	275	270	280	280	Last week	303	264	nq	298	271	255	nq	263
Year ago	253	236	nq	250	267	250	267	270	Year ago	254	239	271	252	255	247	nq	251
US MANUFACTURING COW									DOMESTIC TRADE STEER								
Estimated dressed weight price (cents/kg)									Estimated dressed weight price (cents/kg)								
SALEYARDS				O.T.HOOKS					SALEYARDS				O.T.HOOKS				
NSW	QLD	SA	AV (Aust)	NSW	QLD	SA	AV (Aust)	NSW	QLD	SA	AV (Aust)	NSW	QLD	SA	AV (Aust)		
This week	232	232	219	231	212	213	195	198	This week	330	299	321	326	286	258	285	304
Last week	206	210	232	212	213	199	192	195	Last week	323	304	342	324	273	249	285	300
Year ago	202	191	213	202	213	216	216	230	Year ago	302	270	315	303	267	243	300	297
LIVE EXPORT QUOTES																	
Estimated <u>live</u> weight price (cents/kg)																	
LIGHT STEERS (280-400 kg)				HEAVY STEERS (400+ kg)													
Darwin	T/ville	F/mantle		Darwin	T/ville	F/mantle											
This week	145	nq	nq	145	nq	nq											
Last week	145	130	nq	145	130	nq											
Year ago	nq	nq	nq	150	nq	nq											

Prices courtesy of:  
**Meat and Livestock Australia (MLA).**